

IS AISI 316/L

RUBINETTERIE  
treemme



IS AISI 316/L

RUBINETTERIE  
treemme  
*instruments for water*





# INDEX

5 <sub>MM</sub>	—	15
22 <sub>MM</sub>	—	51
3.6	—	81
WATERTUBE	—	111
40 <sub>MM</sub>	—	133
WATT	—	167
SHOWERS	—	185
KITCHEN	—	209

# COMPANY

Four decades after it was founded, Treemme Rubinetterie continues to propose new collections ranging from the most traditional to the most innovative, while preserving those characteristics that have allowed it to flourish and prosper: high quality, impeccable service and the added value of Made in Italy. In recent years, the company has enjoyed great success in relation to design, focussing on the personalisation and innovation of its products without neglecting the classic and more traditional lines.

Treemme Rubinetterie has received a number of prestigious awards, including DESIGN PLUS, in 2007, for Blok by Giancarlo Vegni, and in 2011, for Philo, designed by Gianluca Belli/Phi Cubo and for Light, designed by Danilo Fedeli. The 5mm project, by Ocostudio e ing.Castagnoli, won the Design Plus award in 2013, and in 2014 it received the GRAN DESIGN ETICO, the GERMAN DESIGN AWARD, the prestigious RED DOT DESIGN AWARD, ADI DESIGN INDEX AWARD and the PREMIO COMPASSO d'ORO 2016. Its latest creation, the 22MM, again designed by Ocostudio e ing.Castagnoli, won the ADI Ceramics Design Award. Treemme

Rubinetterie was founded in 1968, in Asciano, in the province of Siena. Originally, it was called "Rubinetterie Toscane 3M", a reference to the singular coincidence that the surname of all three founding members starts with the letter M (Renato Michelangioli, Armando Medina and Guido Mencarelli).

The company started out as a workshop specialised in the entire tap production process (casting, galvanising, polishing, finishing and assembling) and quickly evolved thanks to the outstanding organization that characterised it from day one. Consumers soon recognised and appreciated its meticulous approach to quality and customer service.

In 1980, the company started a new colour trend by launching the Arcobaleno (Rainbow) collection, created with the valuable collaboration of the DESIGN CALONACI & GAZZEI studio. In 1989, during its main phase of international expansion, it changed its name, first to Rubinetterie 3M (without the word "Toscane") and then to Treemme Rubinetterie, establishing a brand that today is appreciated both in Italy and abroad.

## AZIENDA

Dopo più di 40 anni di attività, Treemme Rubinetterie propone costantemente nuove collezioni che spaziano dalle linee più innovative a quelle più tradizionali, conservando intatte le caratteristiche che ne hanno consentito la nascita e lo sviluppo: alta qualità, servizio impeccabile e la forza del made in Italy.

Negli ultimi anni l'azienda ha ottenuto grandi risultati nel settore del design grazie ad una maggiore cura alla personalizzazione e all'innovazione dei prodotti, tutto questo senza tralasciare le linee più classiche e tradizionali.

Treemme Rubinetterie è stata insignita di prestigiosi riconoscimenti quali il DESIGN PLUS nel 2007 con Blok di Giancarlo Vegni, nel 2011 con Philo disegnato da Gianluca Belli/Phi Cubo e con Light di Danilo Fedeli. Con il progetto 5mm di Ocostudio e ing. Castagnoli, oltre al Design Plus nel 2013, ha inoltre vinto nel 2014 anche il GRAN DESIGN ETICO, GERMAN DESIGN AWARD, il prestigioso RED DOT DESIGN AWARD, ADI DESIGN INDEX ed infine l'ambito PREMIO COMPASSO d'ORO ADI 2016. Mentre per l'ultima nata la 22MM sempre del duo Ocostudio e ing. Castagnoli, è stato vinto il premio ADI Ceramics Design Award.

Treemme Rubinetterie nasce nel 1968 ad Asciano in provincia di Siena. L'azienda fu inizialmente chiamata "Rubinetterie Toscane 3M" per una curiosa coincidenza, ovvero l'iniziale del cognome dei tre i soci fondatori (Renato Michelangioli, Armando Medina e Guido Mencarelli).

Treemme Rubinetterie nasce come officina artigianale dove si realizza il ciclo completo di produzione del rubinetto (fonderia, galvanica, pulimentatura, verniciatura e assemblaggio) e cresce in fretta grazie all'ottima organizzazione della quale si avvale fin da subito. I clienti non tardano a riconoscere e ad apprezzare la meticolosa attenzione che viene rivolta alla qualità e al servizio al consumatore.

Nel 1980 l'azienda lancia la moda del colore realizzando la collezione Arcobaleno con la preziosa collaborazione dello studio DESIGN COLONACI & GAZZEL. Nel 1989, durante la fase di maggior internazionalizzazione, il nome dell'azienda viene modificato in "Rubinetterie 3M" fino ad arrivare al più recente Treemme Rubinetterie, un brand ad oggi affermato e apprezzato anche oltre i confini nazionali.





# MADE IN ITALY

At Treemme Rubinetterie the raw materials as well as the design are Made in Italy. Ever since it was founded, the company has been creating its products with the valuable collaboration of great designers, mostly Italian, thanks to whom the brand has won a number of awards.

Recently, the Treemme Rubinetterie has been rewarded with prestigious prizes such as the German Design Awards, the Red Dot Design Award, the Design Plus Award, as well as the ADI Design Index, ADI Ceramics Award and Premio Compasso d'oro.

Treemme Rubinetterie preserves the quality of its products and their individual components by carefully selecting its suppliers in Italy and carrying out 80% of its production in-house.

A worldwide network of commercial agents, in contact with all the main national and international showrooms, takes care of the marketing side of the business. This distribution network allows the company to better satisfy its clients' needs by offering immediate assistance and an incredible 15 year guarantee on all its products.

La scelta del made in Italy non avviene solo per le materie prime ma anche per il design.

Da sempre Treemme Rubinetterie si avvale del prezioso contributo di designer per lo più italiani per la progettazione dei prodotti, collaborazioni che hanno portato il brand ad essere premiato con numerosi riconoscimenti.

Negli ultimi anni l'azienda è stata insignita di prestigiosi premi come il German Design Award, il Red Dot Design Award, il Design Plus, ADI Design Index, l'ADI Ceramics Award e Premio Compasso d'Oro.

Treemme Rubinetterie ha scelto di conservare intatta la provenienza dei propri prodotti e dei diversi componenti degli stessi, selezionando attentamente i fornitori nazionali e realizzando in stabilimento più dell'80% della produzione a catalogo.

La commercializzazione è affidata ad una rete mondiale di agenti che distribuiscono i prodotti nelle più grandi showroom nazionali ed internazionali. La capillare rete di distribuzione consente all'azienda di soddisfare maggiormente le esigenze dei clienti ai quali offre un'assistenza immediata ed una garanzia di ben 15 anni sui propri prodotti.

## INTERNATIONAL QUALITY STANDARD

Treemme Rubinetterie keeps updating and renewing the certifications it has obtained in relation to the quality of its products and management systems and the compliance with environmental policies according to the standards required. Rubinetterie Treemme stands out for the quality of its products, its experience, technology and style, and today is particularly focussed on its environmental approach.

Reducing its water consumption and the quantity of Lead and Nickel in its production process are just some of its main commitments to the environment. This is achieved by using the company's special technologies (RUVECO, ECO-CARTRIDGE, ENERGY-SAVING SYSTEM etc.) as well as special brass alloys.

Attention to environmental issues starts during the very early stages of production, by introducing production systems with a very low environmental impact, such as sophisticated water depuration systems that allow to recycle all the water used in the chromium plating process. A new closed-loop wastewater management process allows to reduce considerably the amount of water and chromium in muddy residues. Reducing waste in this case means reducing costs as well as any water-related impact on the environment while at the same time lowering power consumption and pollution emissions and improving employees' working conditions.

Using only materials of the highest quality, with the characteristics required to obtain international product certifications, is another essential aspect.

Individual product quality certifications (ACS in France, PUB in Singapore, NSF61 in the US, WATERMARK in Australia, BELGAAQUA in Belgium); ISO9001 process compliance certification, and OQC, quality and origin certification, which guarantees the quality and origin of products MADE IN ITALY.

Treemme Rubinetterie possiede e persegue con continui aggiornamenti le certificazioni di qualità dei prodotti e dei servizi di gestione, del rispetto delle politiche ambientali secondo gli standard previsti. Rubinetterie Treemme si distingue per qualità, grande esperienza, tecnologia, stile, ed oggi vuole focalizzare l'attenzione sulla sensibilità che l'Azienda pone nei confronti dell'ambiente.

Ridurre il consumo dell'acqua, diminuire le quantità di Piombo e Nichel nella produzione, sono solo alcuni degli aspetti di maggiore importanza per l'eco sostenibilità.

Tutte caratteristiche raggiunte grazie all'utilizzo di speciali tecnologie (RUVECO, ECO-CARTRIDGE, ENERGY-SAVING SYSTEM etc.) di cui l'azienda dispone, oltre all'utilizzo di speciali leghe di ottone.

Il rispetto per l'ambiente viene considerato sin dalle prime fasi di produzione, con l'introduzione di cicli produttivi a livelli minimi di impatto ambientale, come i sofisticati impianti di depurazione e riciclo completo dell'acqua utilizzata per la cromatura. Un innovativo processo di trattamento delle acque a ciclo chiuso permette, infatti, di ridurre in modo consistente il contenuto in acqua e cromo dei fanghi residuali da smaltire. Ridurre lo spreco in questo caso non significa quindi solo abbassare i costi economici e ambientali legati all'acqua ma anche all'energia e alle emissioni inquinanti ad essa collegate, oltre che tutelare le condizioni di lavoro dei dipendenti.

Sempre maggiore importanza è riservata anche all'utilizzo di materiale di alta qualità e con caratteristiche idonee per poter acquisire le più importanti certificazioni di prodotto internazionali.

Marchi dei singoli prodotti (ACS francese, PUB singaporese, NSF61 americana, WATERMARK australiana, BELGAAQUA belga), marchio di processo ISO9001 e della certificazione di origine OQC (Origine Controllata Qualità) che garantisce oltre alla qualità del prodotto anche la reale provenienza del MADE IN ITALY.



Premio Compasso d'Oro ADI 2016

**DESIGN PLUS**



German  
Design Award



reddot design award



grandesignEtico 



Italy  
Grand Hotel Bastiani  
Grosseto

Toscana Resort Castelfalfi  
Montaione - Firenze

Grand Hotel Terme  
Castrocaro - Forlì Cesena

Grand Hotel Baglioni  
Firenze

Hotel Residence Roccamare  
Castiglione Della Pescaia  
Grosseto

Hotel El Balear  
Alghero - Sardegna

Helvetia & Bristol  
Firenze

Turin Palace  
Torino

Antico Masetto  
Pistoia

Baja Hotel  
Sardegna

Horse Country  
Sardegna

Corte Fiorita  
Sardegna

Il Convento  
Rapallo

La Bisaccia  
Sardegna

Sofitel Thalassa Timi Ama  
Sardegna  
Catalunya  
Sardegna

Club Hotel  
Sardegna

La Valle  
Sardegna  
Villa Cpichera  
Sardegna

San Pietro  
Napoli

Viminale  
Roma

Astor  
Modena

Joli  
Valverde Di Cesenatico  
La Pace  
Bastia Umbra

La Tana  
Maratea

Sole Mare  
Ventimiglia

Colostrai  
Sardegna

Hotel Montirò  
S.Maria di Leuca

Croatia  
Borovnik  
Tisno

France  
Clim Hotel  
Paris

Mercure  
Pau

Mercure  
Bordeaux

Mercure  
Hyeres

Mercure  
Nice

Gray D'albion  
Cannes

Hostellerie De Plaisance  
Saint Emilion

Hotel Du Pont Vieux  
Carcassonne

Aigle Noir - Hôtel  
Fontainebleau

Hotel Michel Bras  
Laguiole

Hotel Best Western Beausejour  
Lourdes

Le Mas Des Herbes Blanches  
Joucas

Le Chabichou - Hôtel & Spa  
Courchevel

Greece  
The Margi Hotel  
Vouliagmeni Athens

Candia Park Village  
Agios Nikolaos Creta

Milos Cove  
Milos

Asterias  
Thessaloniki

Somewhere Boutique Hotel  
Vouliagmeni Athens

Hotel Cavo Tagoo  
Mykonos

## REFERENCES

Domes Noruz  
Chania Creta

Katikies  
Mykonos

Manoulas Beach Hotel  
Mykonos

Mykonos Bay  
Mykonos

Mykonos No5  
Mykonos

Portugal  
Hotel Santiago de Alfama  
Lisboa

Spain  
Las Piramides  
Malaga

Edificio Nuñez de Balboa  
Madrid

Casa Alberola Alicante,  
Curio Collection by Hilton  
Alicante

Edificio Norte  
(San Pedro de Alcantara) Ma-  
laga

Poland  
Indigo Hotel  
Warsaw

Canada  
Dorval  
Montreal

Dominican Republic  
Plaza Colonial  
Santo Domingo

Emirates  
Old Town Project  
Dubai

Golf Tower  
Dubai

Saudi Arabia  
Yusuf Bin Aimer Kanoo  
Saudi Building - Ryadh

South Africa  
Deunkeld 105 Properties  
Johannesburg

Malesia  
Le Meridien  
Kota Kinabalu  
Shangri-La  
Kota Kinabalu

Taiwan  
One  
Taichung

Le Meridien  
Taipei

Mainland China  
Star River Residential

Shimao Huajiachi

Shimao Nanjing Xiaguan

Shimao Suzhou Yunhecheng

Shimao Wuhan

Star River Haiyi  
peninsula phase III

Star River Haiyi  
peninsula phase IV

Star River Shanghai hotel

Star River Shanghai phase II

Star River Pudong phase III

Star River Xi'an

Star River Hotel Pudong

Star River Tai Yuan

Star River Hotel Shanghai

Star River Macau

Star River Phoenix Valley  
Residential

Hong Kong  
The Cadogan  
150 Belcher's Street

Belcher 97  
7, Belcher's Street

The Babington Hill  
23 Babington Path

The King's Hill  
38-52 Western Street

Twin Regency  
11, Tak Yip Street

Shatin Hotel  
Sun Hung Kai Property

W680 Commercial Building  
680 Castle Peak Road



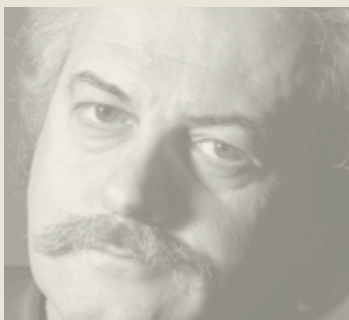
### EMANUEL GARGAN - MARCO FAGIOLI

Both Emanuel Gargan and Marco Fagioli are graduates of the Istituto Superiore per le Industrie Artistiche di Urbino (1994-1998), and after a few years of professional experience, they founded their studio in Umbria. Their work experiments directly with a variety of materials, used both as visual tools and as a mode of expression. They are currently involved in private home projects, installations, communications projects and industrial designs. In 2008 they won the Good Design Award from the Chicago Athenaeum for their Multiplo project for the Indesit Company. In that same year they also received the Kitchen of the Year award for their Anima Space Kitchen project from the Danish magazine BoBedre, designed for Binova. That same project was, furthermore, also chosen by Elle Decor International Design Awards in the Kitchens category. The installation they designed for Vaselli, Marmomacc 2009 won them the Best Communicator Award 2009. In 2013 They won the Design Plus for the collection 5MM designed to Treemme taps.



### PHICUBO - ALESSANDRA BERTINI GIANLUCA BELLI

Gianluca Belli comes to Design following an unusual and non-linear path. Design as a place where mechanical design, studied during high school at a technical college and the aesthetic-formal education, gained during his artistic studies at university, split between the D.A.M.S. (Art, Music and Performing Faculty) of Bologna and the Accademia di Belle Arti (Fine Arts Academy) of Florence, where he studied sculpting. During this period he participated in various illustration and painting group exhibitions. The guideline of his Design is aesthetic and conceptual functionality. "Rethink the world" is his design approach, a modus operandi which he shares with architect Alessandra Bertini, a graduate of the Faculty of Architecture of Florence in 2004 with a thesis on Universal design. This is what led to the creation of Phicubo. Active since March 2007, Phicubo has been involved in design and research, linking its name to the topic of eco-sustainability and Universal Design, for which it has been rewarded by the Tuscan Region in 2010 as one of the 60 eco-efficient companies in Tuscany. Besides the continuing research on biodegradable materials and alternative energies, Phicubo collaborates with various Italian companies in different areas of design, from the furnishing sector, pharmaceuticals, to architecture and urban furnishings.



### GIANCARLO VEGNI

A Designer With A Multidisciplinary Approach, He Boasts A Well-Established Experience In The Kitchen Furnishing Sector, Gained By Working In The Ferretti Design Team Since 1968. Since 1976 He Has Been Heading His Studio, Working In The Industrial Design, Interior Design And Communication Sectors. His Projects Are Based On Functionality And Essential Lines. His Activity Is Varied, Moving With Ease Between Different Product Types. He Designs Kitchens, Bathrooms, Living Areas, Shops And Exhibition Stands And Works In Different Market Sectors Such As Furniture, Sailing, Cars And Interior Architecture. He Continually Seeks The Distinguishing Detail Of An Object To Highlight Its Identity. His Goal Is To Give Emotions And Well-Being. He Works For Established Brands Such As Effeti, For Whom He Coordinates The Artistic Design And Corporate Identity, Edra, Seven, Antonio Lupi, Fasem, Mazzei, Zanussi, Iveco, Novamobili, Unitalia, Bertocci, Lema, Candy, Treemme, Valli&Valli. Highly Regarded And Internationally Famous, He Exports The Quality Of Italian Design Around The World.



### MASSIMILIANO BRACONI

Was born on 25 November 1974 in Civita Castellana. After completing the Art School, he graduated from the European Institute of Design (IED) in Rome In 2000 he founded his own studio in Viterbo starting to collaborate with international companies such as Designer, Art Director and Artist. Wins A'Design awards 2016, German Design Award 2017, Icon Awards 2018, Icon Awards 2019, Index ADI 2019 (Compasso D'oro 2020 Selection), the Archiproduct Design Awards 2019, the Good Design Awards of Chicago 2020 and the IF Design Award 2020. Chameleonic and visionary artist, he realizes his utopias in the widest and most liberating sense possible, advances himself by constantly seeking a taste for "aesthetics" as an authentic experience of the individual. Constantly searching for unusual visual and sensorial concepts, he combines art and design, creating his own language pure visual free from the usual and infected realities. His pristine sign examines human consciousness, observes the past and current cultural taste, however he creates comely and visionary chimeras, avant-garde products and works that he presents to sophisticated and atypical viewers. "Unconventional visionary artist"

## DESIGNERS

### STUDIO Q-BIC

Q-bic is a full service visual identity and branding agency. Founded in 2005 by brothers Luca (Architect) and Marco Baldini (Designer) their projects range from architectural statements and graphic identity projects through to scenography (theatres) and commercial design projects (temporary events). "We conceive our design projects as an attitude or statement where there is a recognizable character. Once this character takes form and identity, we are then able to deliver this identity through the relevant spaces and creative mediums"



### DANILO FEDELI

Danilo Fedeli was born in Lucignano (Province of Arezzo) in 1973. He graduated, cum laude, in industrial design at the Faculty of Architecture of Florence, with a thesis on the bathroom and its new ethical and social dimension in relation to water. He worked as a designer for a well-known company operating in the shower systems sector, where he gained significant experience in the bathroom sector, before going freelance. In 2008 he founded his 3df studio, developing design projects. Today he collaborates with well-known national companies and designs furnishing products and even stagings for the fashion sector. He continually seeks new uses for shapes, and believes that beauty is not designable, but that it lies silently in the simplicity of continuous lines. His works are a sophisticated combination of everyday experiences and passions, in a single vision of the world to be. He has participated at international competitions and has achieved significant results. A fellow of the ADI (Italian Industrial Design Association) as of 2009.



### GIAMPIERO CASTAGNOLI

Giampiero Castagnoli graduated in mechanical engineering in 1974. He has dedicated his successful career to the bathroom fixtures industry, holding important managerial roles in leading companies both in Italy and across Europe. Since 1985 he has completely renovated the company's product range and been involved in design, planning, engineering and internal production. The registration of significant patents has improved considerably the range of products, especially in relation to taps (for example, the PWS system). During the years, he has published a number of articles in specialised magazines and university textbooks. Since 2008, he works as a freelancer offering his expertise to a number of leading companies in the bathroom fixtures & design business.



### MARCO PISATI

Designer fascinated by new materials and new technologies, tests his ideas in the most extreme sectors: starting from the aerospace, designing interiors bound to the concept of space habitability in absence of gravity for the A.S.I. (Italian Space Agency), reaching the earth's nomadic one, realizing the first example of interactive nomadic office (Motorhome Aci 2002). Invited to expose his works at Leopolda Exposition in Florence (Deep Inside-Image 2003) he presented with the company Grado Zero Espace, leader brand in the aerospace textile branch, a prototype of a jacket for astronauts in Diaplex (a tissue with a memory of shapes). He cooperates with companies as : A.S.I., Alenia Spazio, Iacsa, Grado Zero Espace, Iguzzini Illuminazione, A.C.I., Emilio Pucci (LVMH group), Bandini Rubinetterie, Il Bagno Bandini, K8 Radiatori, Glass Design, Ceramica & Complementi, 3M Rubinetterie.







5MM

emanuel gargano, marco fagioli,  
ing. giampiero castagnoli



## AISI 316/L BRUSHED STEEL AND ELEGANT DESIGN HIGHLIGHT THE STRIKING FEATURES BEHIND THE 5MM TECHNOLOGY

L'acciaio AISI 316/L spazzolato e il design elegante mettono in risalto le caratteristiche essenziali della tecnologia che ha generato la 5mm







RWIT 2851 IS 96  
Concealed washbasin mixer  
Miscelatore lavabo incasso





RWIT 2851 IS 97  
Concealed washbasin mixer  
Miscelatore lavabo incasso

SLEEK GEOMETRICAL DESIGN, INNOVATIVE TECHNOLOGY AND  
QUALITY AISI 316/L STEEL FABRICATION COME TOGETHER TO  
CREATE A TRULY UNIQUE LAVATORY MASTERPIECE

Dalle geometrie definite, tecnologia innovativa e la qualità dell'acciaio  
AISI 316/L per creare un unico disegno capace di adeguarsi alle  
molteplici visioni del bagno





IT 9026 IS ZZ ZZ  
49,2 cm. bathroom shelf  
Mensola cm. 49,2





IT 9074 IS ZZ ZZ  
Liquid soap dispenser, glass holder and large shelf  
Dosatore sapone liquido, portabicchiere e mensola grande



WITH A SURFACE INVITING TO THE TOUCH, DISCOVER PURE  
EXPRESSION OF UNADULTERATED FINESSE WITH THE 5MM

5mm materico, generoso al tatto, elegante in modo essenziale e  
informale

IT 9065 IS ZZ ZZ  
50 cm. towel holder  
Portasalviette cm. 50









IT 2811 IS 5M ZZ  
Washbasin mixer  
Miscelatore lavabo

OBJECT OF PURE DESIGN, THIS UNIQUE FAUCET WITH AN  
ULTIMATE THICKNESS OF 5MM CONVEYS GREAT LIGHTNESS  
AND ELEGANCE

Si presenta come un vero e proprio oggetto di design la cui  
estrema leggerezza è data dall'utilizzo di un unico spessore 5mm







IT 2861 IS ZZ ZZ + RWIT 2571 IS 01  
Concealed washbasin mixer  
Miscelatore lavabo incasso



IT 2861 IS ZZ ZZ + RWIT 2865 IS 01  
Concealed washbasin mixer  
Miscelatore lavabo incasso

RWIT 2896 IS 02  
Electronic washbasin tap  
Rubinetto elettronico con fotocellula











IT 2822 IS 5M ZZ  
Bidet mixer  
Miscelatore bidet



## 5MM IS THE EMBODIMENT OF CONTEMPORARY DESIGN AND TECHNICAL MASTERY, AN ASTONISHING BLEND OF FORM AND FUNCTION

5mm è il volto di una forte concezione del design e della tecnica con un dialogo aperto fra filosofie diverse

RWIT 2805 IS 12  
Concealed bath/shower mixer  
Miscelatore vasca/doccia incasso



RWIT 2847 IS 01 + RWIT 2847 IS 21  
Shower head and cascade  
Soffione a parete e cascata





RWIT 2847 IS 52 + RWIT 2597 IS 31  
+ RWIT 2847 IS 72 + IT RTBR 255 IS x 6  
Thermostatic shower set  
Set doccia termostatico



## 5MM PORTRAYS THE DIVERSITY OF CONTEMPORARY LIFESTYLES, A DESIGN FOCAL POINT CAPABLE OF ENHANCING ANY DECOR

5mm ritratto della varietà dei lifestyle contemporanei, capace di cogliere e interpretare desideri ed affinità dell'abitare

x2 IT 9011 IS ZZ ZZ  
Robe hook  
Porta abiti





RWIT 2847 IS 01 + RWIT 2849 IS 96 + RWIT 2847 IS 72  
Shower set  
Set doccia





RWIT 2847 IS 01 + RWIT 2808 IS 96  
Shower set  
Set doccia







22MM

emanuel gargano, marco fagioli,  
ing. giampiero castagnoli

22MM ENSURES A GREAT AESTHETIC LIGHTNESS, A CLEANING OF THE SIGN AND A GREAT FLEXIBILITY OF INSERTION WITHIN THE KINDS OF VERY DIFFERENT WASHBASINS

22mm garantisce una grande leggerezza estetica, una pulizia di segno e una grande flessibilità di inserimento all'interno di tipologie di lavabi molto diversi tra loro









IT 3014 IS 2G ZZ  
Single hole washbasin  
Monoforo lavabo




IT 1111 IS 2H ZZ  
Washbasin mixer  
Miscelatore monocomando lavabo








IT 8373 IS ZZ ZZ  
Liquid soap dispenser, glass holder and small shelf  
Dosatore sapone liquido, portabicchiere e mensola piccola



## THE INSPIRATION FOR THE 22MM DESIGN COMES FROM AN ATTEMPT TO CREATE SIMPLE SHAPES

L'ispirazione per il design di 22mm nasce dal tentativo di creare forme semplici





CLEAN AND RIGOROUS, SUMS UP THE PROCESS  
OF DESIGN TRANSFORMATION

Pulito e rigoroso, sintetizza il processo di trasformazione del design







RWIT 1151 IS 03  
Concealed washbasin mixer  
Miscelatore monocomando lavabo incasso

RWIT 3051 IS 03  
Wall mounted washbasin  
Gruppo lavabo a muro







RWIT 6082 IS 01  
Floor standing washbasin mixer  
Miscelatore lavabo da terra



IT 8301 IS ZZ ZZ  
Toilet roll holder  
Portacarta

IT 8365 IS ZZ ZZ  
50 cm. towel holder  
Portasalviette cm. 50







# THE STEEL CHARM SUMMARIZES THE WILL TO RECONCILE A CONTEMPORARY LANGUAGE WITH A PURE AESTHETIC


Il fascino dell'acciaio sintetizza la volontà di conciliare un  
linguaggio contemporaneo con un'estetica priva di orpelli



IT 6597 IS ZZ ZZ + RWIT 11C2 IS 01 + RWIT 2847 IS 71  
Shower set  
Set doccia



RWIT 11A2 IS 01  
Concealed mixer with 2 ways diverter  
Miscelatore monocomando con deviatore 2 uscite



IT RTBR 382 IS + RWIT 11C2 IS 01  
+ RWIT 2847 IS 71  
Shower set  
Set doccia





IT RTBR 300 IS  
Ceiling shower-head  
Soffione a soffitto





x2 IT 8311 IS ZZ ZZ  
Robe hook  
Porta abiti





3.6

ing. giampiero castagnoli



## DESIGN AND TECHNOLOGY CONVERGE IN A PROJECT THAT ADAPTS PERFECTLY TO THE LATEST DEMANDS OF AN INCREASINGLY DIGITAL, CONNECTED MARKET

Design e tecnologia si fondono in un progetto che si adatta perfettamente alle attuali esigenze di un mercato sempre più digitale e connesso













IT 9A18 IS TZ ZZ  
Washbasin mixer  
Miscelatore monocomando lavabo



IT 9A15 IS TE ZZ  
Rubinetto elettronico  
Electronic washbasin mixer







RWIT 9AA5 04 21  
Concealed washbasin mixer  
Miscelatore monocomando lavabo incasso



RWIT 9AA5 03 02  
Concealed washbasin mixer  
Miscelatore monocomando lavabo incasso





RWIT 9AD7 01 03  
Concealed bath/shower mixer  
Miscelatore vasca/doccia incasso


RWIT 9AD7 IS 21  
Concealed bath/shower mixer  
Miscelatore vasca/doccia incasso







RWIT 9AD9 IS 21 + RWIT 2847 IS 21  
Concealed bath/shower mixer  
Miscelatore vasca/doccia incasso



## 3.6 IS A COLLECTION DESIGNED TO ADAPT PERFECTLY TO ANY BATHROOM THANKS TO A CONTEMPORARY LOOK DISTINGUISHED BY SIMPLE AND ELEGANT CONTOURS

3.6 è una collezione pensata per adattarsi perfettamente ad ogni ambiente bagno grazie ad un'estetica contemporanea, caratterizzata da forme essenziali ed eleganti





RWIT 2847 IS 42 + RWIT 9AA3 IS 01 + RWIT 2847 IS 72  
Shower set  
Set doccia





RWIT 9AA3 IS 01  
Concealed mixer with 3 ways diverter  
Miscelatore monocomando con deviatore 3 uscite





RWIT 2847 IS 52 + RWIT 2575 IS 01 + RWIT 2847 IS 72  
Thermostatic shower set  
Set doccia termostatico

THE NEW VERSION EXTENDS THE 3.6 SERIES, ALREADY PROPOSED WITH A CYLINDRICAL CONTROL KNOB OR A SOPHISTICATED, SLENDER LEVER WITH STRAIGHT-LINED DESIGN

La nuova versione amplia la serie 3.6, già proposta con manopola cilindrica oppure con una sofisticata leva sottile dalle linee squadrate





IT 6599 IS ZZ VS  
Anti-limescale shower-head  
Soffione a parete anticalcare



RWIT 2847 IS 71 + RWIT 9AC2 IS 03  
Concealed mixer with 2 ways diverter  
Miscelatore monocomando con deviatore 2 uscite





# WATERTUBE

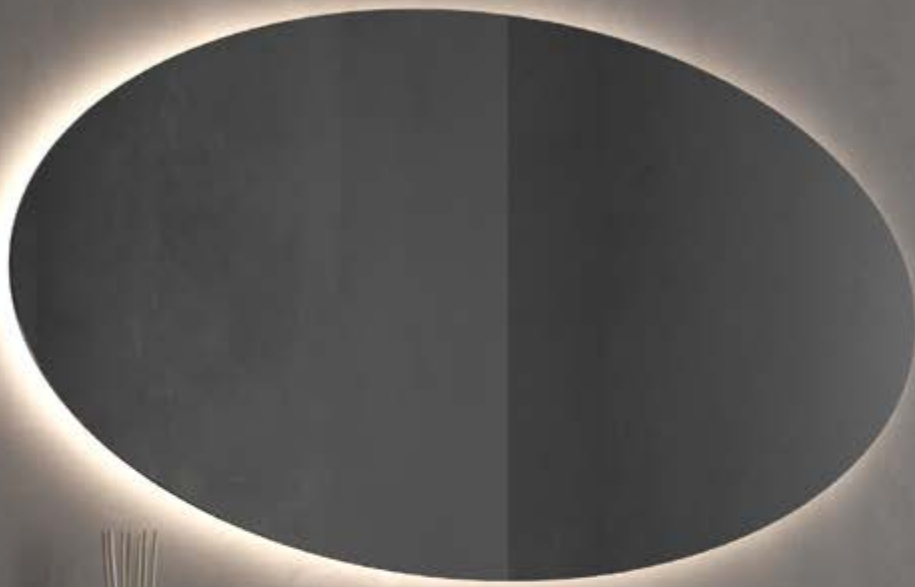
Massimiliano Braconi

“I BELIEVE IN SIMPLE VISUAL LANGUAGES AND IN TIMELESS PRODUCTS. FOR THE CREATION OF WATERTUBE I WAS INSPIRED BY THE CLASSIC PUBLIC FOUNTAINS OF THE PAST, WHERE THE WATER Poured DOWN FROM A SIMPLE COPPER TUBE. I WANTED TO CAPTURE THE PRIMITIVE ESSENCE OF THAT VISUAL PURENESS, TRANSFERRING IT TO A MODERN PRODUCT PERFECT FOR A CONTEMPORARY AND INDUSTRIAL BATHROOM”. THIS IS HOW MASSIMILIANO BRACONI, THE DESIGNER OF THIS NEW LINE, DESCRIBED THE INSPIRATION OF HIS IDEA.

“Credo nei semplici linguaggi visivi e nei veri prodotti senza tempo. Per Watertube mi sono lasciato ispirare dalle classiche fontane pubbliche del passato, quelle dalle quali l'acqua scrosciava attraverso un semplice tubo di rame. Ho voluto ricercare l'essenza primitiva di quella purezza visiva, regalandola a un prodotto moderno perfetto per un bagno contemporaneo e industriale”. Così Massimiliano Braconi, il designer che ha firmato questa nuova linea, racconta l'ispirazione dalla quale è nata l'idea.











IT 4A18 01 WT ZZ  
Washbasin mixer  
Miscelatore monocomando lavabo



RWIT 4AA5 IS 02  
Concealed washbasin mixer  
Miscelatore monocomando lavabo incasso





RWIT 4AC5 03 02  
Concealed washbasin mixer  
Miscelatore monocomando lavabo incasso





RWIT 4AD8 04 04  
Concealed bath/shower mixer  
Miscelatore vasca/doccia incasso





WATERTUBE, EXTREMELY ESSENTIAL AND  
SIMPLE, IS MADE OF AISI316L STAINLESS STEEL,  
THAT MAKES IT COMPACT AND SOBER.

Watertube, estremamente essenziale di grande  
semplicità, prodotta in acciaio aisi316l, lo rendono  
compatto e rigoroso.











RWIT 4AF2 01 01 + RWIT 2847 01 71 + RWIT 4A47 01 02  
Shower set  
Set doccia



## WATERTUBE BRINGS US THE WATER THAT HAS LIVED MANY ADVENTURES IN ITS MILLENNIAL JOURNEY.

Watertube porta a noi l'acqua che lungo il suo tragitto, tracciato in millenni, ci racconta le sue avventure.



IT 4A22 IS WT ZZ  
Bidet mixer  
Miscelatore monocomando bidet



40MM  
treemme



## CLEAN AND RIGOROUS, THESE ARE THE FEATURES OF THE NEW 3M TAP. UNCOMPROMISING PRESENCE DOES NOT ALLOW TO BE FORGOTTEN

Pulito e rigoroso, sono queste le nuove key features del nuovo rubinetto 3M. Presenza senza compromessi non permette di essere dimenticato









IT 1327 IS 40 ZZ  
Washbasin mixer  
Miscelatore monocomando lavabo





IT 1315 IS ZZ ZZ  
Electronic washbasin tap  
Rubinetto elettronico con fotocellula

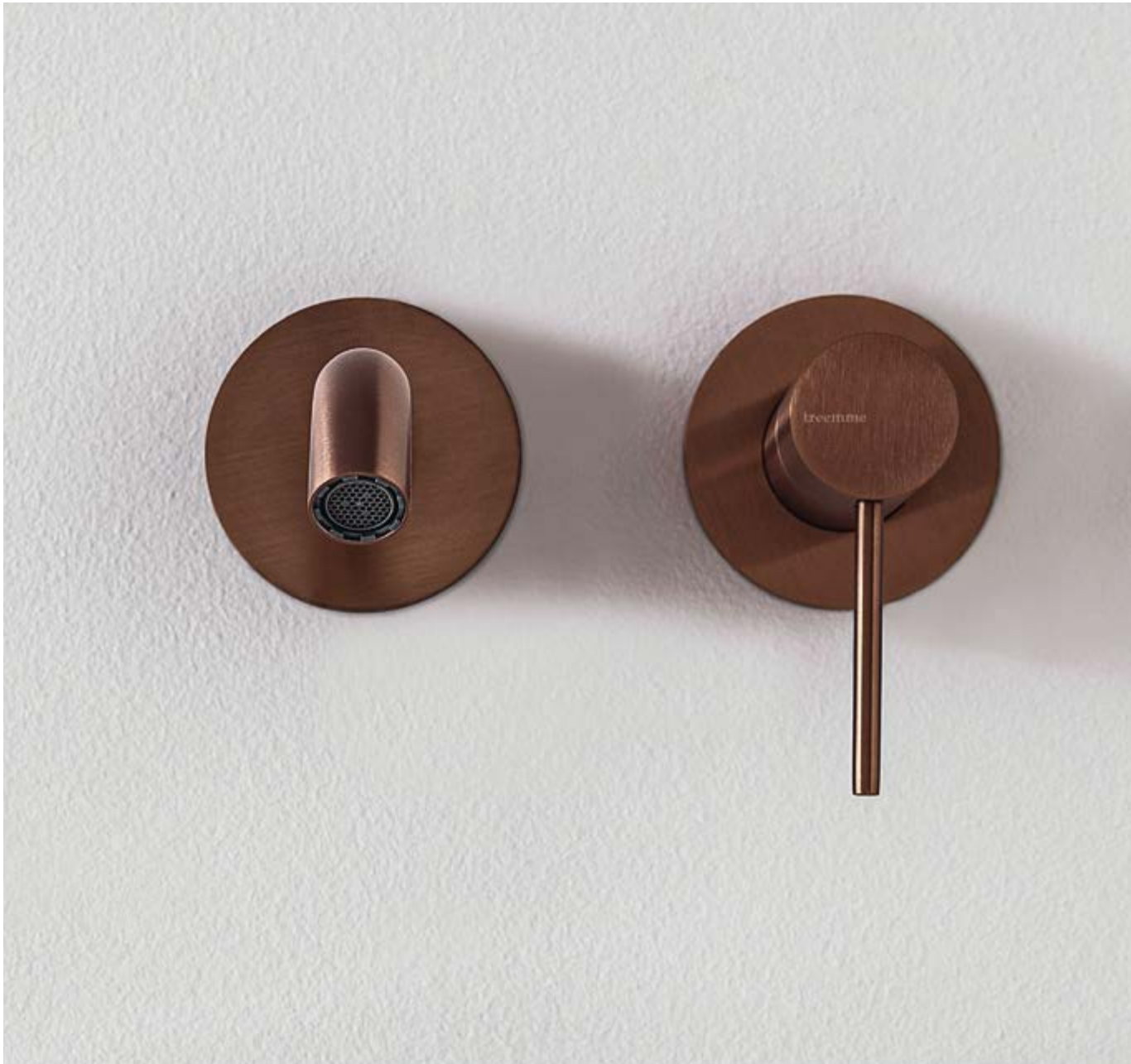








IT 1318 04 40 ZZ  
Washbasin mixer  
Miscelatore monocomando lavabo



RWIT 13C5 03 02  
Concealed washbasin mixer  
Miscelatore monocomando lavabo incasso

THE DELICACY AND ELEGANCE OF THE LINES MELT INTO A  
DRAWING THAT WANTS TO BE TIMELESS

La delicatezza e l'eleganza delle linee si fondono in un disegno  
che vuole essere senza tempo



IT 4Z26 IS ZZ ZZ  
56,8 cm. bathroom shelf  
Mensola cm. 56,8





IT 4Z06 01 ZZ ZZ  
40 cm. single towel holder  
Portasalvietta cm. 40





RWIT 1314 IS 03  
Floor standing washbasin mixer  
Miscelatore lavabo da terra







RWIT 13D7 IS 03  
Concealed bath/shower mixer  
Miscelatore vasca/doccia incasso







RWIT 1303 IS 03  
Floor standing bathub mixer  
Miscelatore vasca da terra



## 40MM IS COMPLETELY MADE OF BRUSHED STAINLESS STEEL, SOFT AND SINUOUS AT TOUCH

40mm è realizzato completamente in acciaio inox satinato, dal tatto morbido e sinuoso

IT 6598 IS ZZ VS + RWIT 13A2 IS 01  
+ RWIT 2847 IS 71  
Shower set  
Set doccia







RWIT 13F2 03 02  
Concealed mixer with 2 ways diverter  
Miscelatore monocomando con deviatore 2 uscite

## PERSONAL SOLUTIONS, FUNCTIONAL AND AESTHETIC TO MEET A PRIVATE WELLNESS

Soluzioni personali, funzionali ed estetiche per soddisfare il  
benessere privato.



x4 IT 4Z11 04 ZZ ZZ  
Robe hook  
Porta abiti



x2 IT 1Z36 BB ZZ ZZ  
Corner sponge holder  
Angolare doccia

x2 Art. IT 1Z04 BB ZZ 12 - Art. IT 1Z04 BB ZZ 06  
Wall-mounted shower basket  
Cestino doccia da parete







IT 4Z01 IS ZZ ZZ  
Toilet roll holder  
Portacarta

RWIT 13D4 IS 02  
Concealed mixer with wc hand shower  
Miscelatore incasso con doccetta per WC







WATT  
Studio Q-BIC





RWIT 2B90 01 01 + RWIT 2BF6 01 25  
Shower set  
Set doccia

“FROM LIGHT TO WATER” THE ARCHITECTURAL FIRM Q-BIC SIGNS THE NEW WATT COLLECTION. WATT IS THE NEW PROPOSAL OF SINGLE-LEVER AND THERMOSTATIC SHOWER VALVES FOR BUILT-IN SHOWERS INSPIRED BY THE WORLD OF LIGHTING.

“Dalla luce all’acqua” lo studio di architettura Q-Bic firma la nuova collezione Watt. Watt è la nuovissima proposta di monocomando e termostatici per doccia da incasso ispirati al mondo dell’illuminazione.





RWIT 2B86 IS 01 + RWIT 2BF6 IS 25  
+ IT 6598 IS ZZ VS  
Shower set  
Set doccia

“THE ELECTRICITY WORLD WAS PART OF MY FAMILY BACKGROUND, AND IT RESURFACED AS I DESIGNED THIS NEW COLLECTION” SAID MARCO BALDINI FROM Q-BIC.

“Il mondo dell’elettricità faceva parte del mio background familiare ed è riaffiorato mentre progettavo questa nuova collezione” racconta Marco Baldini di Q-Bic.











IT RTBR 381 04 + RWIT 2B94 04 01 + RWIT 2BF6 04 25  
Shower set  
Set doccia

“I WANTED TO GIVE THIS LINE A VINTAGE LOOK THAT RECALLED THE OLD LIGHT SWITCHES, BUT IN A MODERN DESIGN STYLE. THE NAME WATT CAME AS A CONSEQUENCE”.

“Ho quindi voluto dare a questa linea un aspetto vintage che ricordasse le placche elettriche di una volta, il tutto ovviamente in un’ottica assolutamente moderna e di design. Il nome Watt è poi venuto da sé di conseguenza”.







RWIT 2B86 04 01 + RWIT 2BF6 04 25  
Shower set  
Set doccia







IT 2B60 01 WA ZZ  
Shower set  
Set doccia



# SHOWERS

treeemme

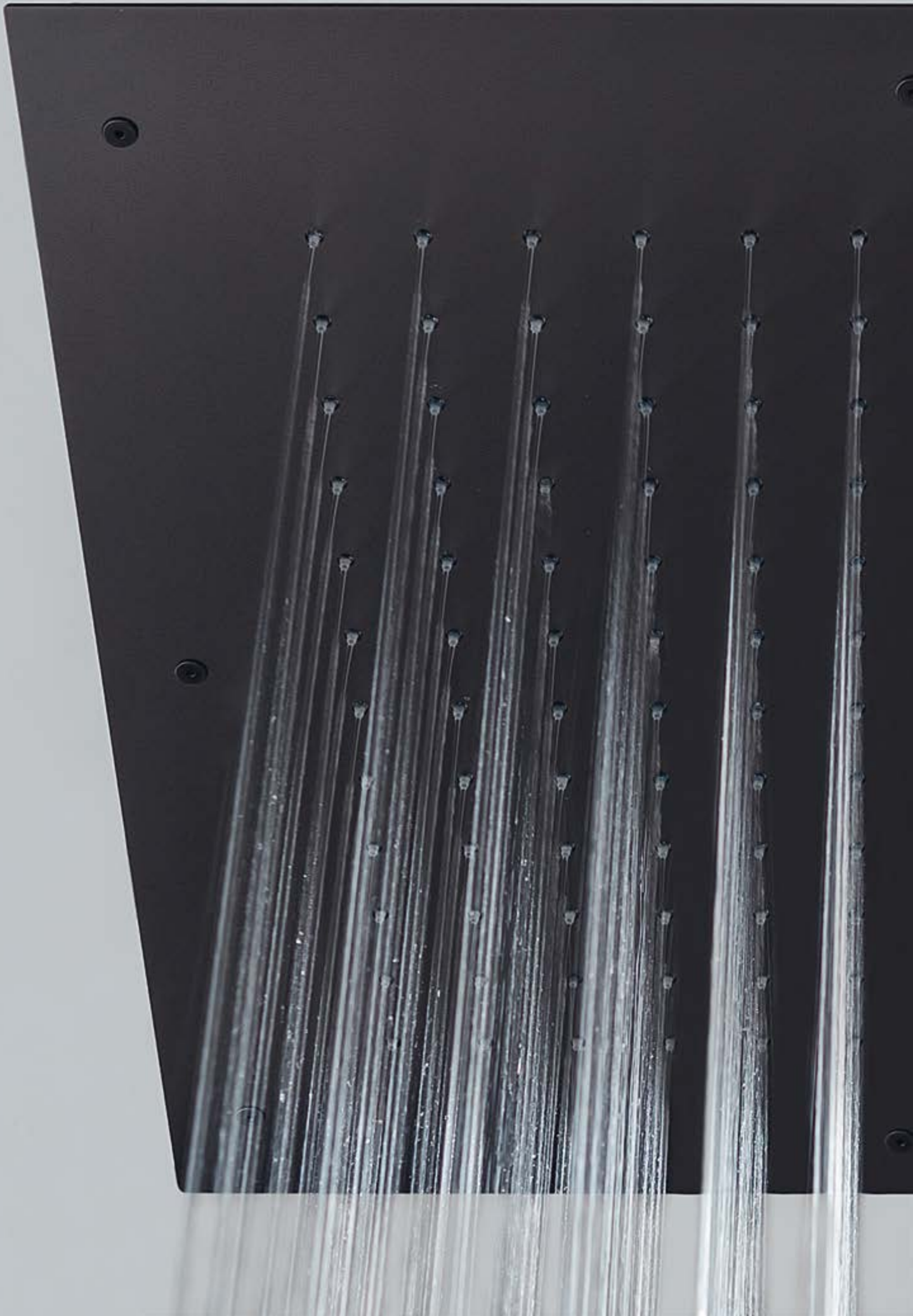


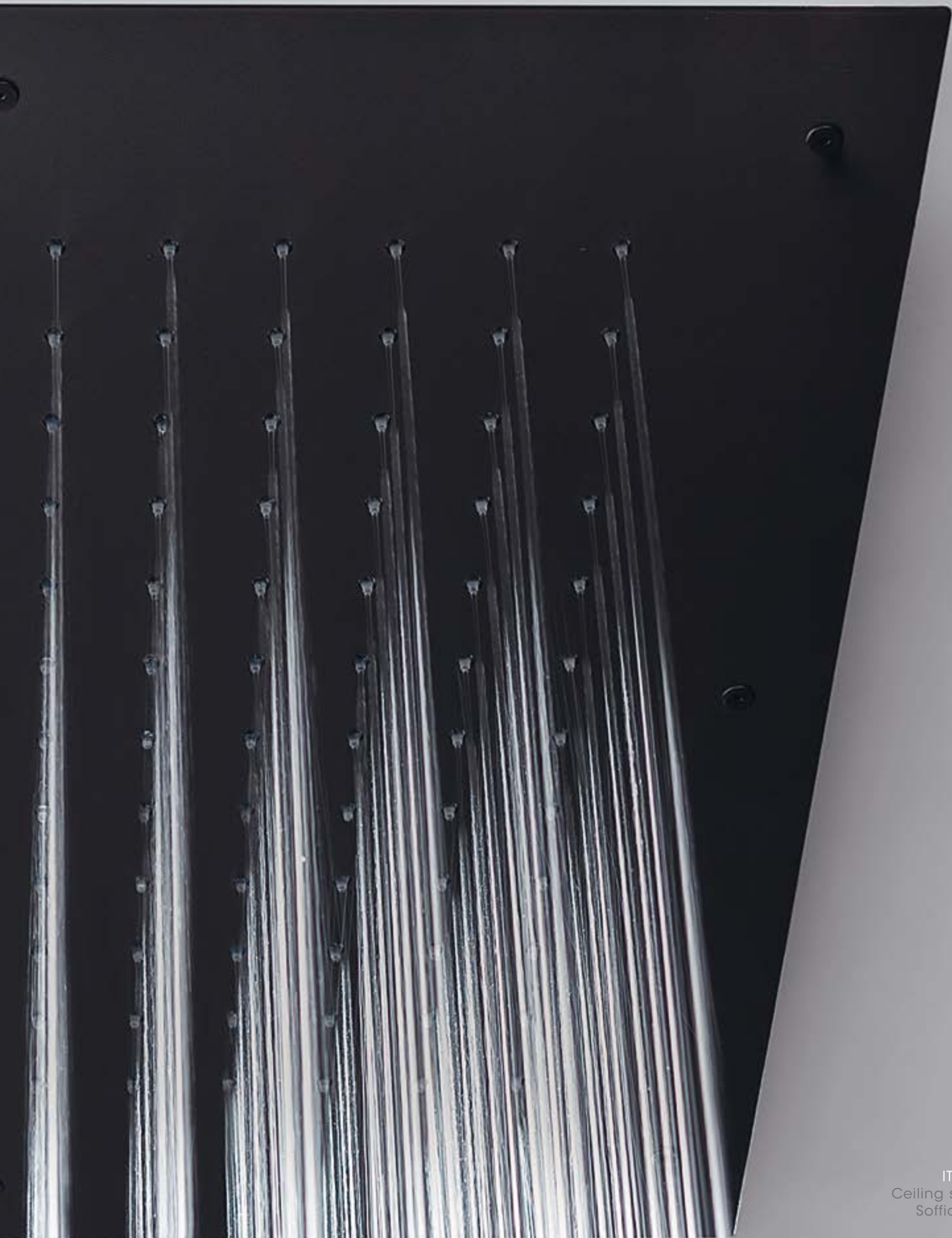
## PROFESSIONAL SHOWER TO REDISCOVER AND LEAVE THE BENEFITS OF WATER.

Set doccia professionali per riscoprire e vivere i  
benefici dell'acqua.

IT RTBR 389 IS + RWIT 6064 IS 35 + RWIT 2847 IS 71  
Shower set  
Set doccia







IT RTBR 302 01  
Ceiling shower-head  
Soffione a soffitto



IT RTBR 389 IS  
Ceiling shower-head  
Soffione a soffitto



AN EXTRAORDINARY EXPERIENCE, IMMERSSED IN AN ARCHITECTURE OF ENVELOPING WATER. INTENSITY AND EFFECTS INSPIRED BY WATER AND TAMED BY TECHNOLOGY THAT PERFECTS OUR MOST IMPORTANT RESOURCE.

Esperienza straordinaria, immersi dentro un'architettura d'acqua avvolgente fatta su misura. Intensità ed effetti ispirati all'acqua e domati dalla tecnologia che perfeziona la nostra risorsa più importante.







IT RTBR 386 IS  
Ceiling shower-head  
Soffione a soffitto



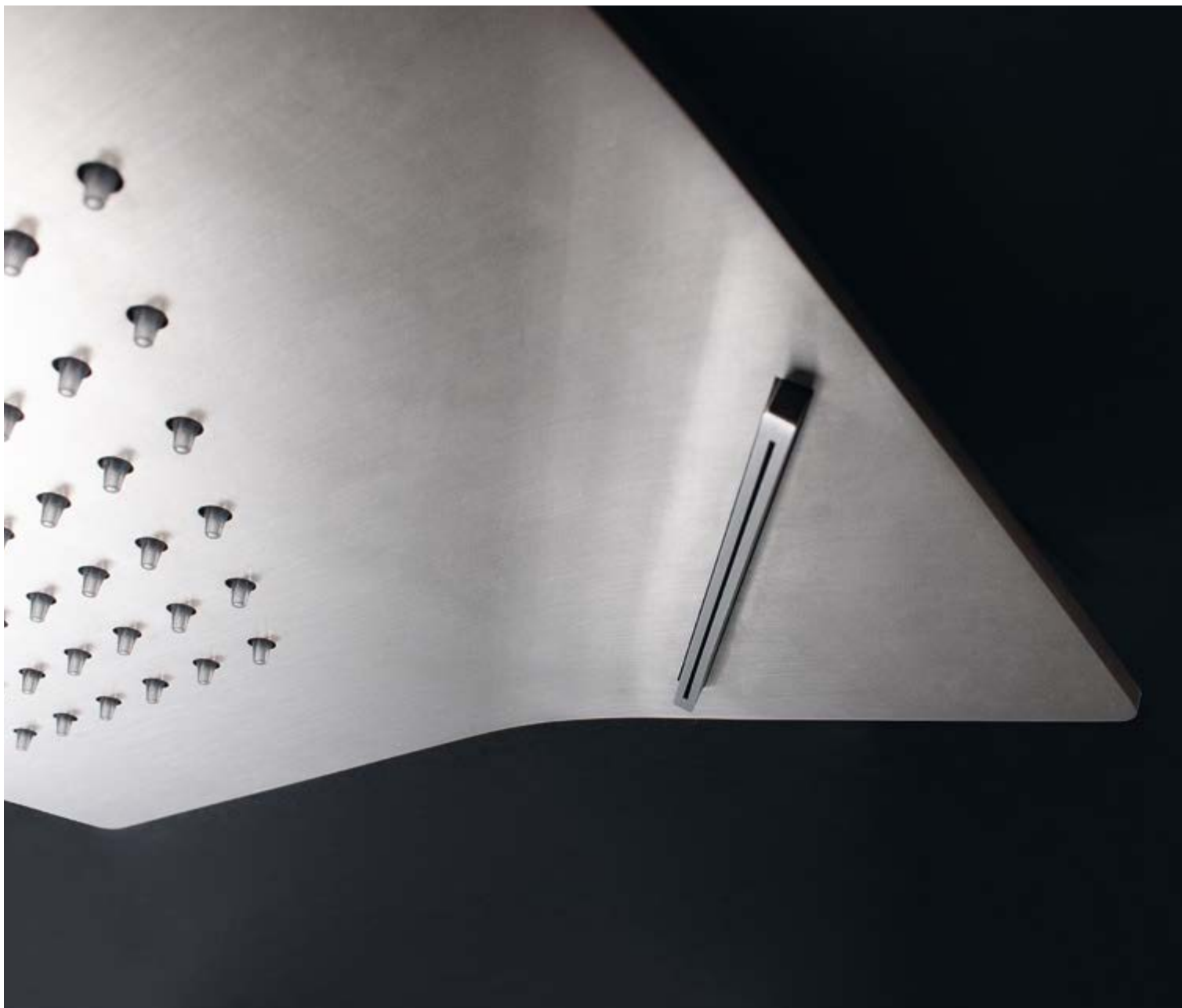
IT RTBR 387 IS  
Ceiling shower-head  
Soffione a soffitto



IT RTBR 406 IS  
Ceiling shower-head  
Soffione a soffitto



ORIGAMI  
design studio picubo  
ing. giampiero castagnoli



IT RTBR 406 IS  
Ceiling shower-head  
Soffione a soffitto

ORIGAMI  
design studio phicubo  
ing. giampiero castagnoli

A SIMPLE FOLD MAKES IT SO INTERESTING AND GIVES LIFE TO A SHEET OF STAINLESS STEEL, LEAVING A FORESEE AND IMAGINING THE WORLD HIDDEN BY THE CEILING

Una semplice piega rende interessante e dà vita a un foglio di acciaio inox, lasciando intravedere e immaginare il mondo nascosto dal soffitto



IT RTBR 406 IS + RWIT 2849 IS 96  
+ RWIT 2847 IS 72  
Shower set  
Set doccia





IT RTBR 382 03 + RWIT 13A2 03 01 + RWIT 2847 03 71  
Shower set  
Set doccia

IT RTBR 302 01  
+ RWIT 8A46 01 03  
+ RWIT 2847 01 71  
Shower set  
Set doccia







IT RTBR 381 IS  
Shower-head  
Soffione a parete



IT RTBR 381 IS  
Shower-head  
Soffione a parete









KITCHEN  
treemme

THE MIXERS WE ARE SHOWCASING ARE MADE FROM STEEL AND ARE A PERFECT MIX OF MODERN SHAPES AND PRACTICALITY.

I miscelatori proposti sono realizzati in acciaio e coniugano perfettamente la modernità delle forme ad una praticità di utilizzo.



IT 2833 IS 5M ZZ  
Miscelatore lavello  
Sink mixer









IT 3031 IS 2G ZZ  
Monoforo lavello  
Single hole sink mixer



IT 1133 IS 2H ZZ  
Gruppo lavello  
Wall mounted sink mixer



IT 1134 IS 2H ZZ  
Monoforo lavello  
Single hole sink mixer



IT 1331 IS 40 ZZ  
Miscelatore lavello  
Sink mixer







IT 1629 IS 40 ZL  
Miscelatore lavello con doccia estraibile  
Sink mixer with extractable hand-shower







IT 1343 IS 40 ZZ  
Miscelatore lavello con doccetta estraibile  
Sink mixer with extractable hand-shower

I dati e le immagini contenuti nel presente catalogo sono da ritenersi indicativi,  
Rubinetterie 3M S.r.l. si riserva la facoltà di modificare o adeguare anche senza obbligo di preavviso

The images and information contained in this catalogue are to be considered indicative  
and may be subject to variations without prior notice

Les images et les informations contenues dans ce catalogue sont fournies à titre indicatif  
et peuvent faire l'objet de modifications sans aucun préavis

Die in diesem Katalog enthaltenen Bilder und Daten dienen nur zur Illustration  
und können auch ohne vorherige Ankündigung geändert werden

Изображения и данные, содержащиеся в этом каталоге, следует рассматривать как ориентировочные  
и могут быть изменены даже без предварительного уведомления

Las imágenes y datos que apare en este catálogo son a modo indicativo pudiendo  
sufrir variaciones incluso sin previo aviso

本图册中包含的皆为指示性的图片与信息  
如有更改，恕不另行通知

De afbeeldingen en informatie in deze catalogus dienen als indicatief te worden beschouwd  
en kunnen zonder voorafgaande kennisgeving worden gewijzigd

Dane i obrazy zawarte w tym katalogu / cenniku należy traktować jako orientacyjne - poglądowe  
Rubinetterie 3M S.r.l. zastrzega sobie prawo do modyfikacji lub adaptacji nawet bez wcześniejszego powiadomienia

RUBINETTERIE  
**treemme**  
*instruments for water*

is AISI 316/L 2022





*instruments for water*