

The image shows two weathered wooden Adirondack chairs on a light-colored stone patio. In the background, there is a lush green golf course with tall grasses and a line of trees under a cloudy sky. The text 'THICK 20mm' is overlaid on the upper part of the image, with a ruler icon integrated into the letter 'I' of 'THICK'.

THICK 20mm

TERRATINTA
group

THICK^{20mm}



by TERRATINTA
group

terratinta 100%
ceramiche made in
Italy



INDEX

6 INSTALLATION, FEATURES, ADVANTAGES METODO DI POSA, CARATTERISTICHE, VANTAGGI

by **terratinta**
ceramiche 100% made in Italy

by **magica**



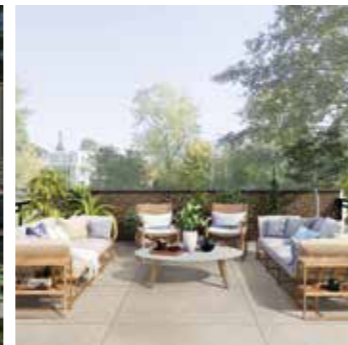
8
Norse Powder 90x90



12
Norse Clay 90x90



16
Norse Ash 90x90



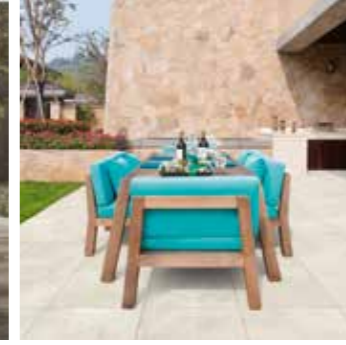
20
Lagom Beige 90x90



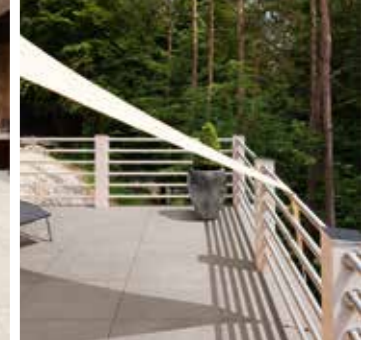
68
Nodi Libeccio 30x120



72
Nodi Scirocco 30x120



76
Marstood Stone01 60x60



80
Marstood Stone02 60x60



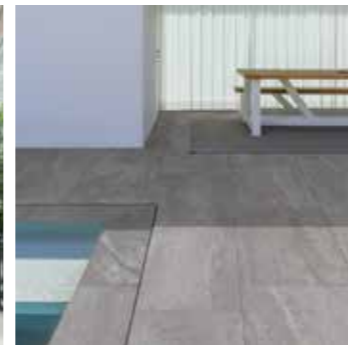
24
Lagom Oyster 90x90



28
Lagom Smoke 90x90



32
Oppdal Bomull 60x120



36
Oppdal Grus 60x120



84
Ceppo White 60x120



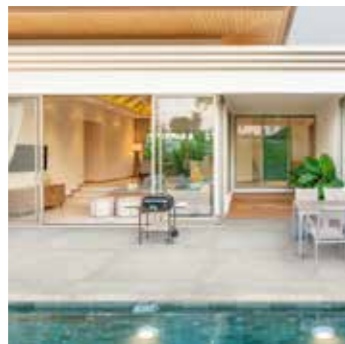
88
Ceppo Grey 60x120



92
Marstood Stone05 60x120



40
Vicentina Cenere 60x120



44
Kos Vit 90x90



48
Kos Moln 90x90



52
Kos Brun 60x60



56
Kos Moln 60x60



60
Stonedesign Cinnamon 60x60



64
Stonedesign Ash 60x60

98 **SPECIAL PIECES**
PEZZI SPECIALI

100 **PACKAGING**
IMBALLI

102 **TECHNICAL FEATURES**
CARATTERISTICHE TECNICHE

INSTALLATION METHODS | METODO DI POSA

DRY INSTALLATION | POSA A SECCO

THICK20mm can be laid directly on grass, sand or gravel; this kind of installation is quick and easy, ideal for creating walkways.

THICK20mm può essere posato direttamente su erba, sabbia o ghiaia; questo tipo di installazione è semplice e veloce, ideale per creare camminamenti.



RAISED INSTALLATION | POSA SOPRAELEVATA

The raised installation allows the creation of a technical gap of variable height between the substrate and the floor. This system allows the rain water to drain off into the floor joints. It also allows irrigation systems, pipes and lighting systems to be concealed and allows the floor to be replaced and inspected easily at any time.

La posa rialzata consente la creazione di un gap tecnico di altezza variabile tra il sottofondo e il pavimento. Questo sistema consente all'acqua piovana di defluire nelle giunture del pavimento. Consente inoltre di nascondere sistemi di irrigazione, tubi e sistemi di illuminazione e consente di sostituire e ispezionare facilmente il pavimento in qualsiasi momento.



TRADITIONAL ADHESIVE INSTALLATION | POSA TRADIZIONALE A COLLA

This laying system guarantees an excellent breakage load thanks to the performance of THICK20mm. Ideal solution for carriageable and cycling lanes.

Questo sistema di posa garantisce un eccellente carico di rottura grazie alle prestazioni di THICK20mm. Soluzione ideale per corsie carrabili e ciclabili.

FEATURES AND ADVANTAGES | VANTAGGI & CARATTERISTICHE RECTIFIED | RETTIFICATI

Tougher than timber, **stronger** than stone, THICK20mm porcelain represents the ideal solution for outdoor paving for gardens, terraces and swimming pools.

Più duro del legno, più forte della pietra, THICK20mm rappresenta la soluzione ideale per pavimentazioni esterne per giardini, terrazze e piscine.

It perfectly **links your indoor and outdoor living spaces**: all our THICK20mm products are available also in 10mm thick version for indoor use.

Collega perfettamente i tuoi spazi abitativi interni ed esterni: tutti i nostri prodotti THICK20mm sono disponibili anche nello spessore 10 mm per uso interno.

THICK20mm is a **fully vetrified unglazed porcelain**, it is a maintenance free product that does not require any sealing or treating, it's easy to install and easy to maintain.

THICK20mm è una porcellana non smaltata completamente vetrificata, è un prodotto privo di manutenzione che non richiede alcuna sigillatura o trattamento, di facile installazione e manutenzione.

Being a vetrified porcelain, THICK20mm is **frost proof** and suitable for low temperatures.

Essendo una porcellana vetrificata, THICK20mm è resistente al gelo e adatto alle basse temperature.

THICK20mm is **resistant to chemicals**, therefore it is resistant to chlorine and salty water, it is perfect for swimming pool edges.

THICK20mm è resistente alle sostanze chimiche, quindi è resistente al cloro e all'acqua salata, è perfetto per i bordi della piscina.

The entire THICK20mm range is **antislip**, classified as R11 for DIN 51130, A+B for DIN51097

L'intera gamma THICK20mm è antiscivolo, classificata come R11 per DIN 51130, A + B per DIN51097

THICK20mm range includes a wide choice of **special trims** such as steps, grids, copings and many others suitable for pools, gardens and urban designs able to meet any need.

La gamma THICK20mm comprende un'ampia scelta di pezzi speciali come gradini, griglie, coprimuretti e molti altri adatti per piscine, giardini e progetti urbani in grado di soddisfare qualsiasi esigenza.

THICK20mm is **100% Made in Italy**, produced using the most advanced and ECO FRIENDLY technologies available on the market.

THICK20mm è 100% Made in Italy, prodotto utilizzando le tecnologie più avanzate ed *eco friendly* disponibili sul mercato.

NORSE

Powder
ultra matt finish



90x90cm | 36"x36"

by TERRATINTA CERAMICHE



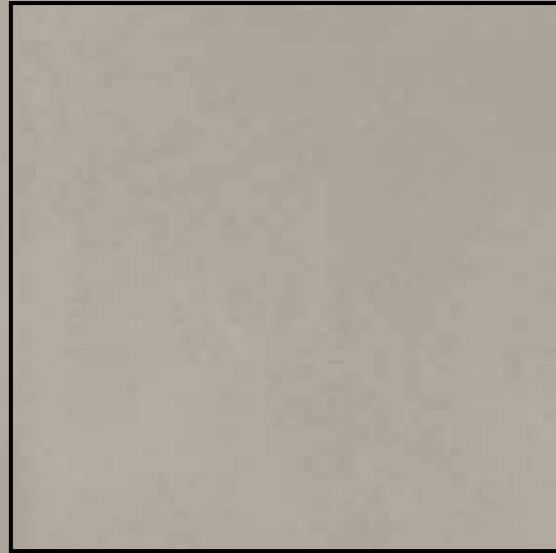


Norse
Powder ultra matt
90x90cm | 36"x36"

by TERRATINTA CERAMICHE

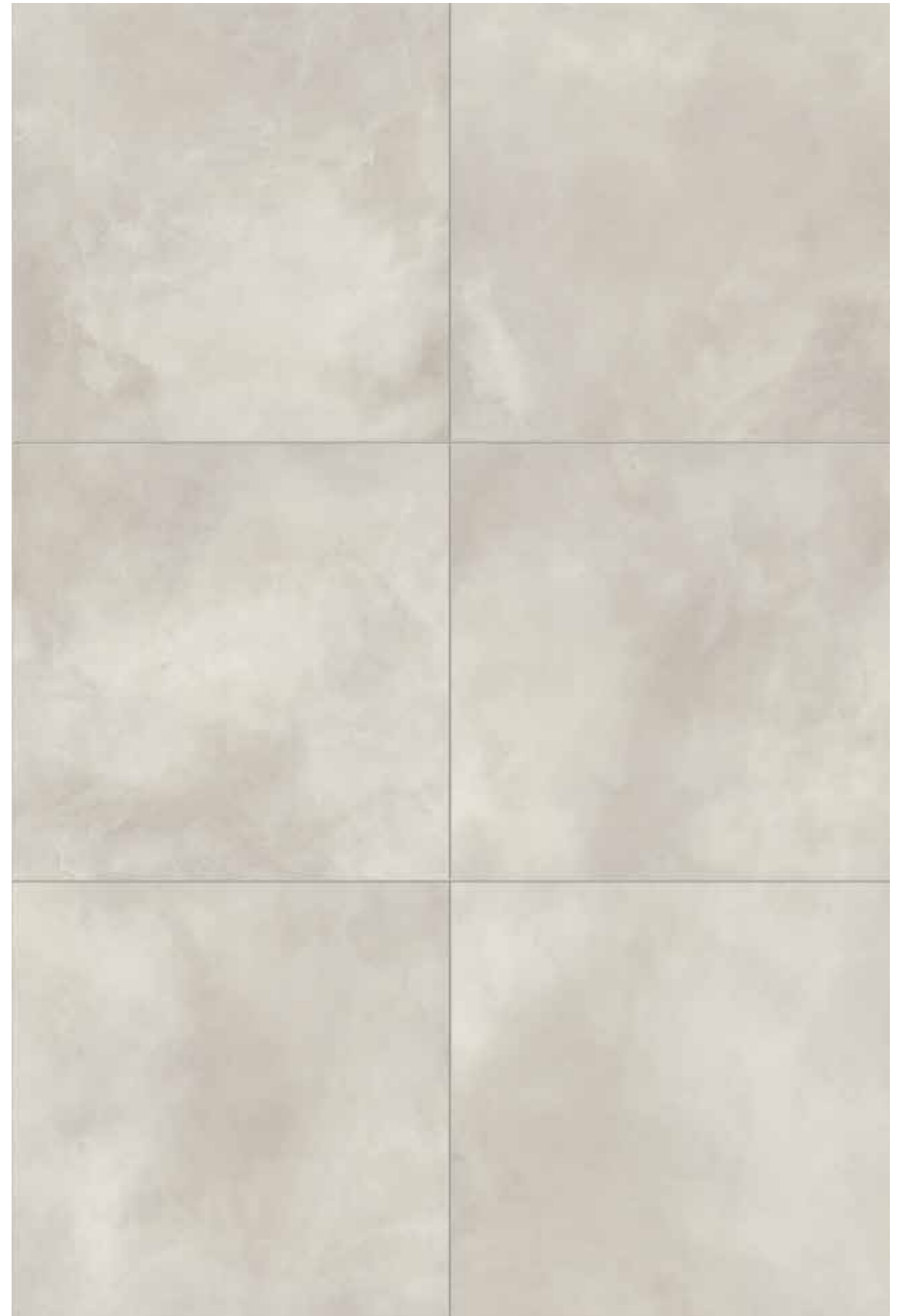
NORSE


Clay
ultra matt finish



90x90cm | 36"x36"

by TERRATINTA CERAMICHE



V2
MODERATE 

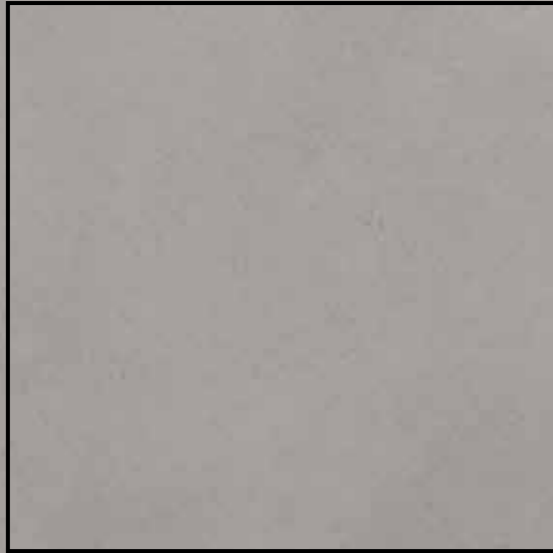


Norse
Clay ultra matt
90x90cm | 36"x36"

by TERRATINTA CERAMICHE

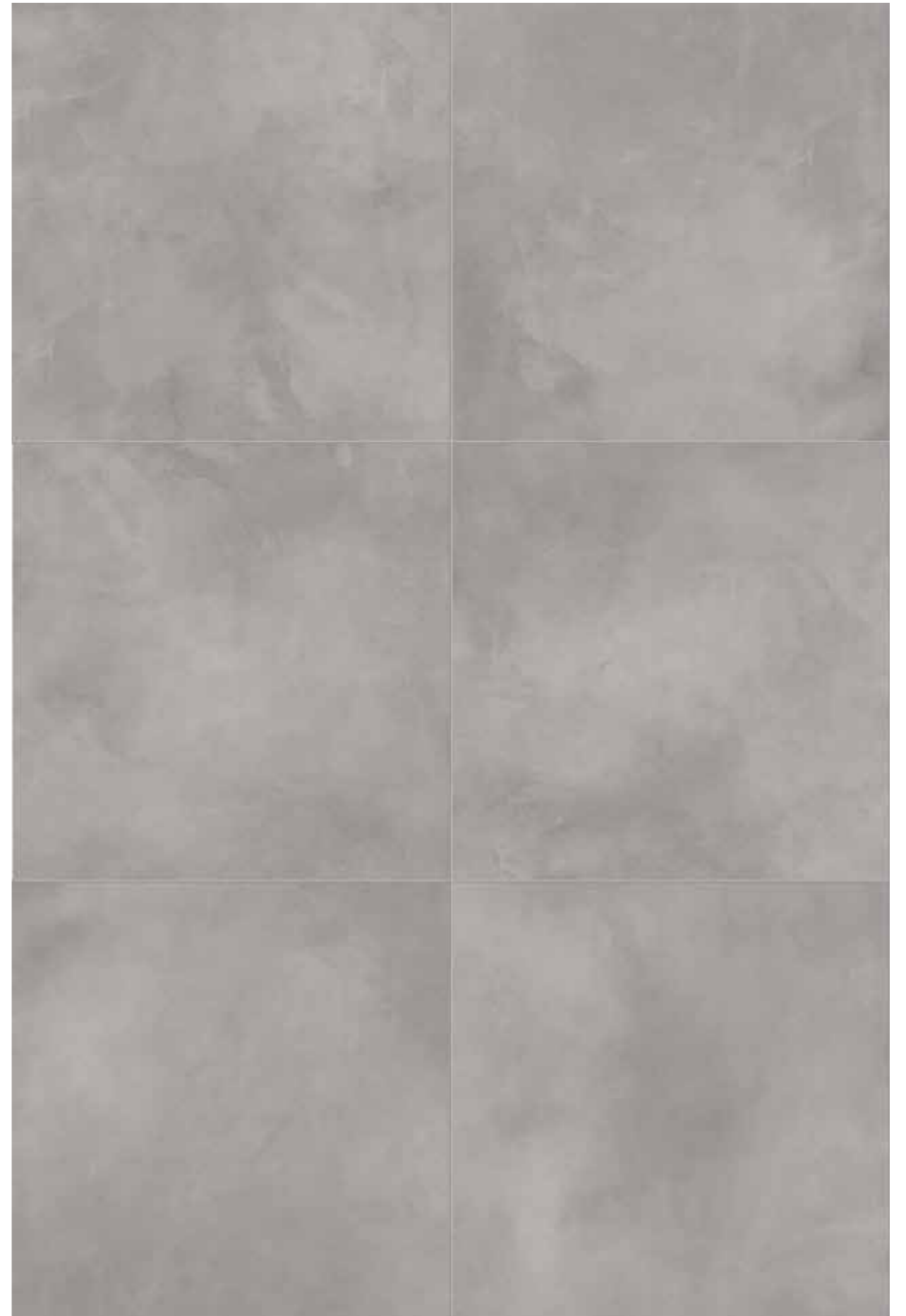
NORSE

Ash
ultra matt finish



90x90cm | 36"x36"

by TERRATINTA CERAMICHE



V2
MODERATE



Norse
Ash ultra matt
90x90cm | 36"x36"

by TERRATINTA CERAMICHE

LAGOM

Beige
ultra matt finish



90x90cm | 36"x36"

by TERRATINTA CERAMICHE





Lagom
Beige ultra matt
90x90cm | 36"x36"

by TERRATINTA CERAMICHE

LAGOM

Oyster
ultra matt finish



90x90cm | 36"x36"

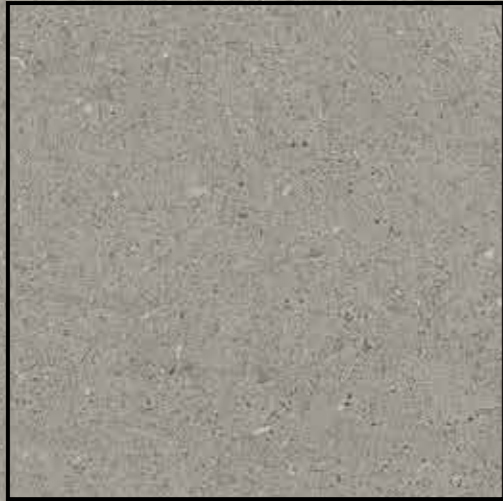
by TERRATINTA CERAMICHE



Lagom
Oyster ultra matt
90x90cm | 36"x36"

LAGOM

Smoke
ultra matt finish



90x90cm | 36"x36"

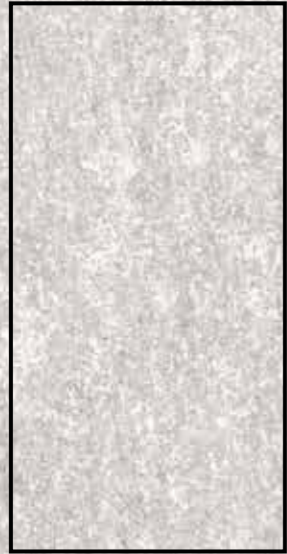
by TERRATINTA CERAMICHE





OPPDAL


Bomull
ultra matt finish



60x120cm | 24"x48"

by TERRATINTA CERAMICHE



V2
MODERATE 

Oppdal
Bomull ultra matt
60x120cm | 24"x48"

OPPDAL

Grus
ultra matt finish

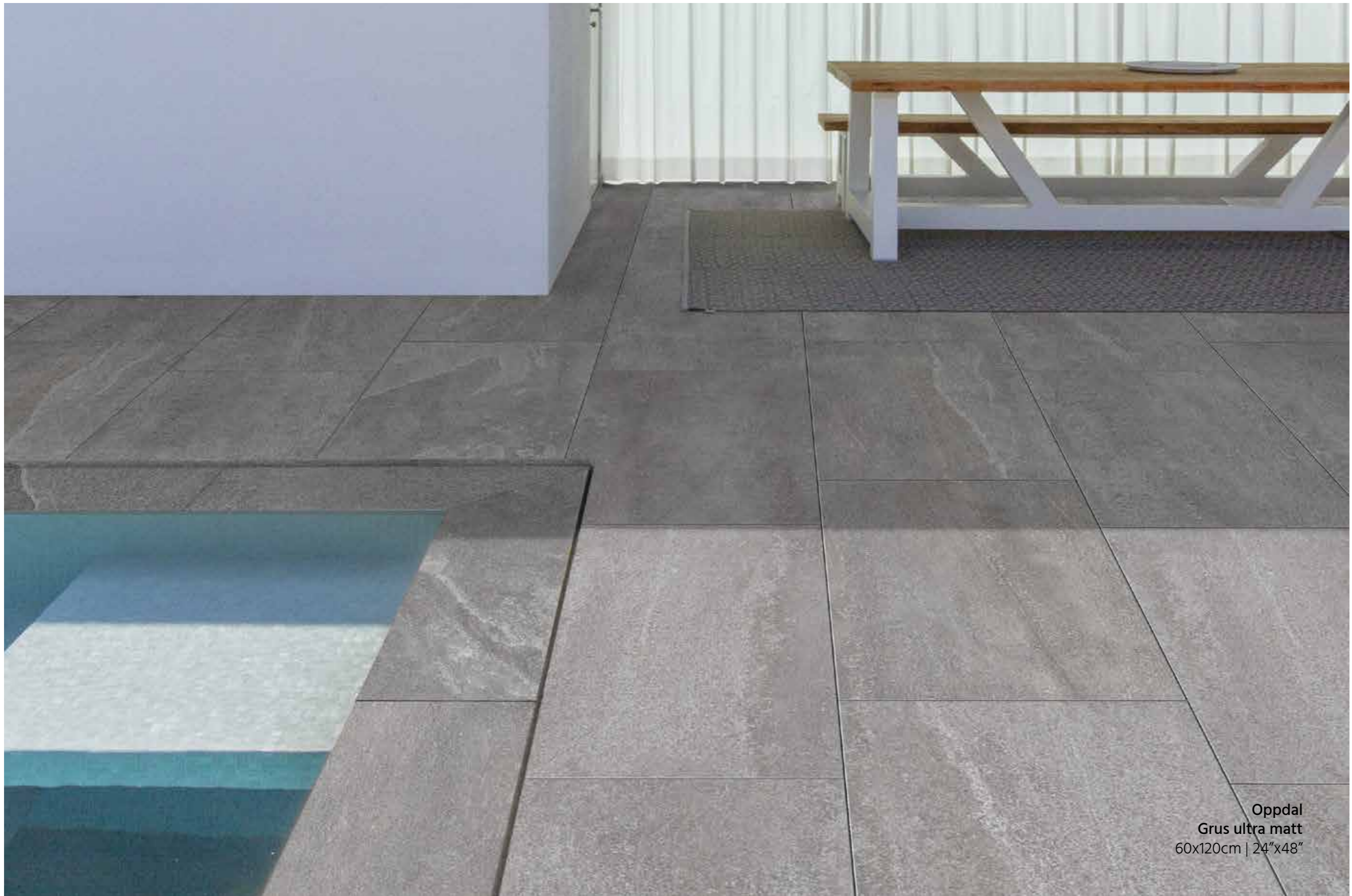


60x120cm | 24"x48"

by TERRATINTA CERAMICHE



V2
MODERATE



Oppdal
Grus ultra matt
60x120cm | 24"x48"

VICENTINA


Cenere
ultra matt finish



60x120cm | 24"x48"

by TERRATINTA CERAMICHE



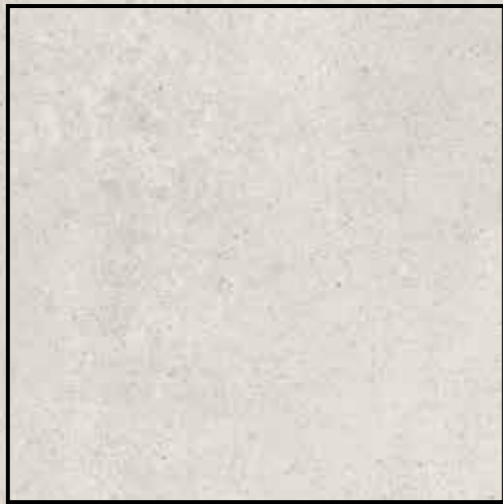
V2
MODERATE 

Vicentina
Cenere ultra matt
60x120cm | 24"x48"



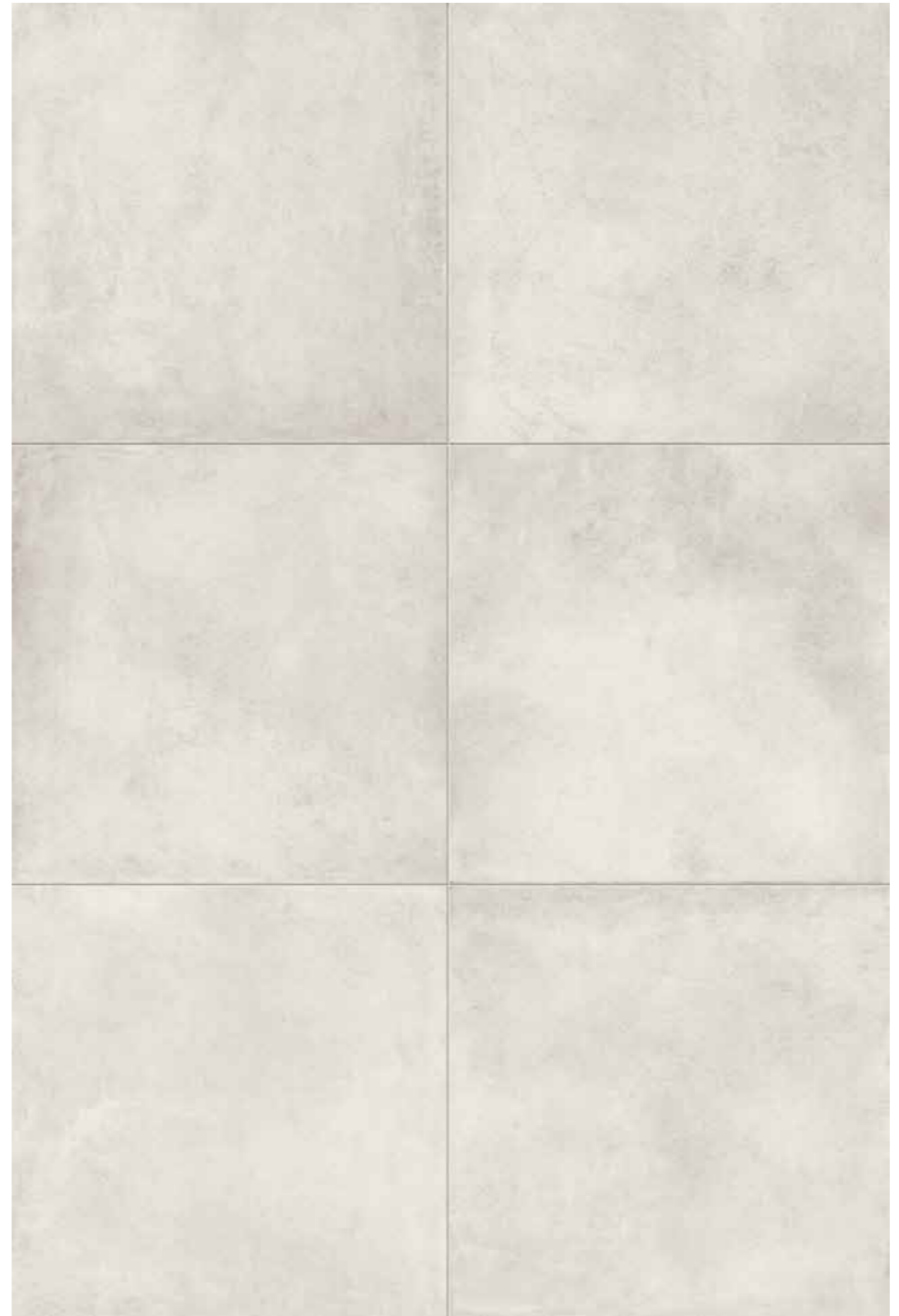
KOS

Vit
ultra matt finish



90x90cm | 36"x36"

by TERRATINTA CERAMICHE



Kos
Vit ultra matt
90x90cm | 36"x36"



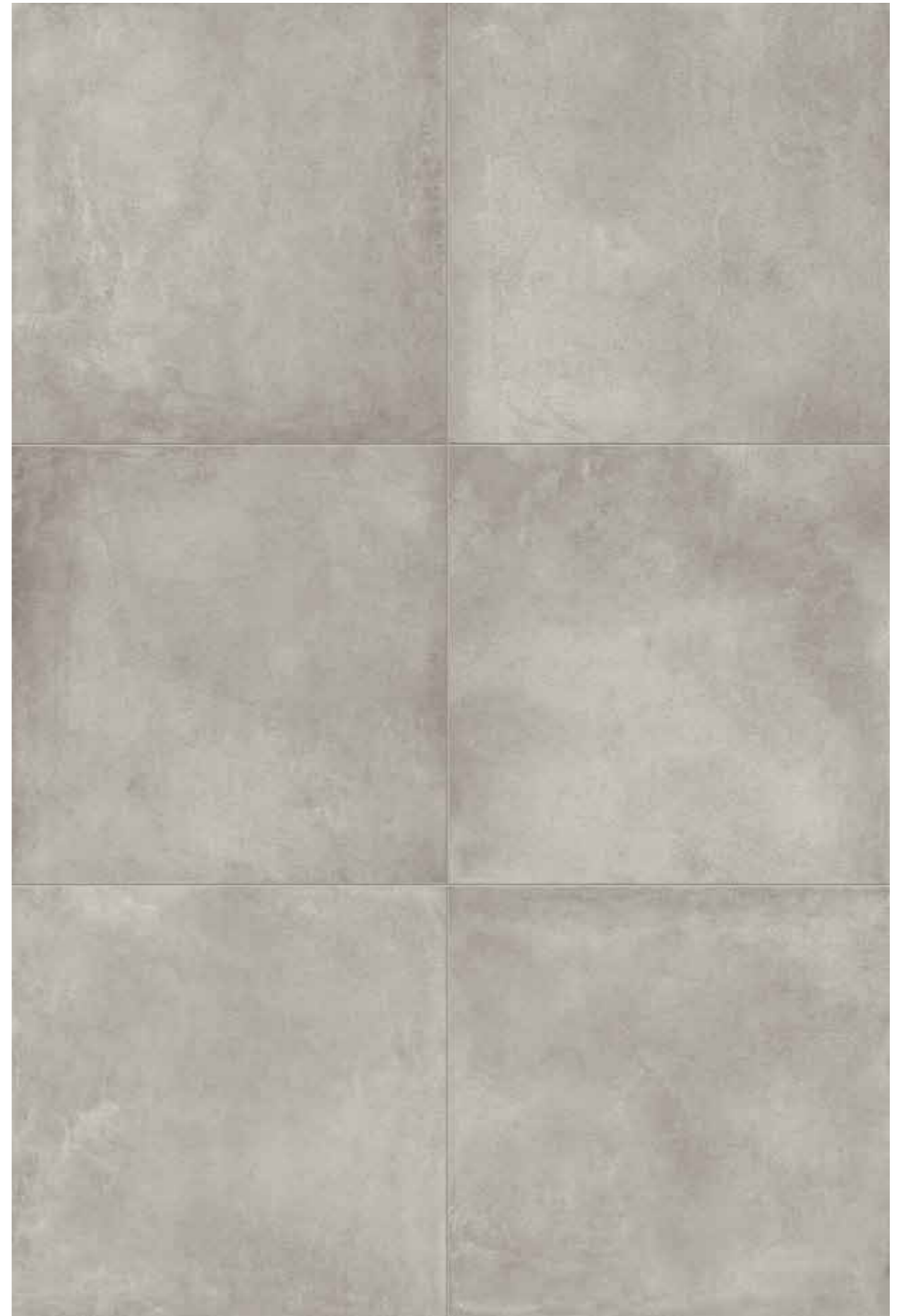
KOS

Moln
ultra matt finish



90x90cm | 36"x36"

by TERRATINTA CERAMICHE



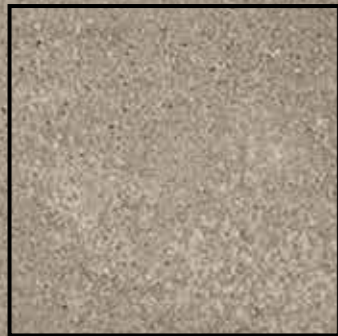


by TERRATINTA CERAMICHE

Kos
Moln ultra matt
90x90cm | 36"x36"

KOS

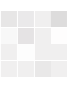
Brun
ultra matt finish



60x60cm | 24"x24"

by TERRATINTA CERAMICHE



V2
MODERATE 



Kos
Brun ultra matt
60x60cm | 24"x24"

KOS

Moln
ultra matt finish



60x60cm | 24"x24"

by TERRATINTA CERAMICHE



V2
MODERATE

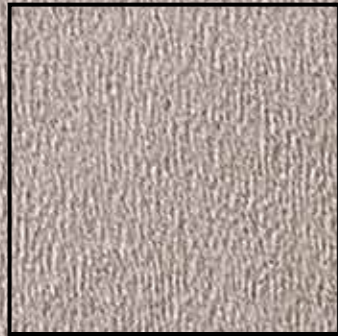
by TERRATINTA CERAMICHE



Kos
Moln ultra matt
60x60cm | 24"x24"

STONEDESIGN

Cinnamon
chiselled finish



60x60cm | 24"x24"

by TERRATINTA CERAMICHE



V3
HIGH 



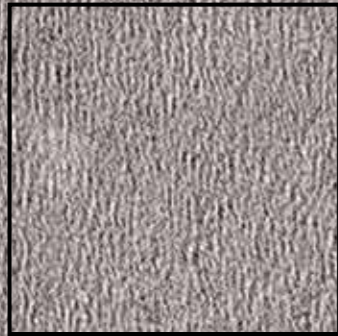
Stonedesign
Cinnamon chiselled
60x60cm | 24"x24"



by TERRATINTA CERAMICHE

STONEDESIGN

Ash
chiselled finish



60x60cm | 24"x24"

by TERRATINTA CERAMICHE



V3
HIGH 

Stonedesign
Ash chiselled
60x60cm | 24"x24"



NODI

Libeccio
structured finish



30x120cm | 12"x48"

by CERAMICA MAGICA



V2
MODERATE 



by CERAMICA MAGICA

Nodi Libeccio
structured
30x120cm | 12"x48"

NODI


Scirocco
structured finish



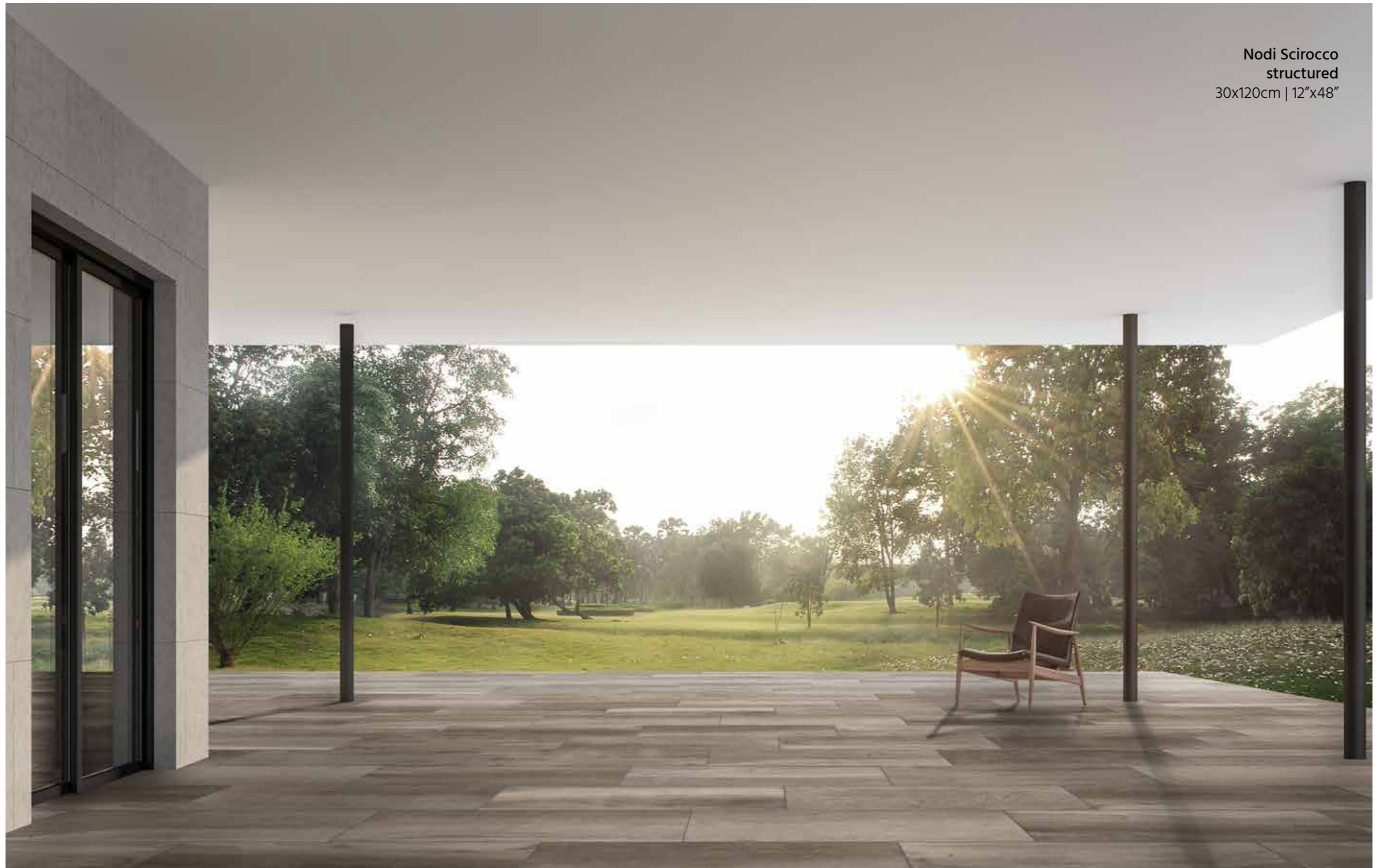
30x120cm | 12"x48"

by CERAMICA MAGICA



V2
MODERATE 

Nodi Scirocco
structured
30x120cm | 12"x48"



by CERAMICA MAGICA

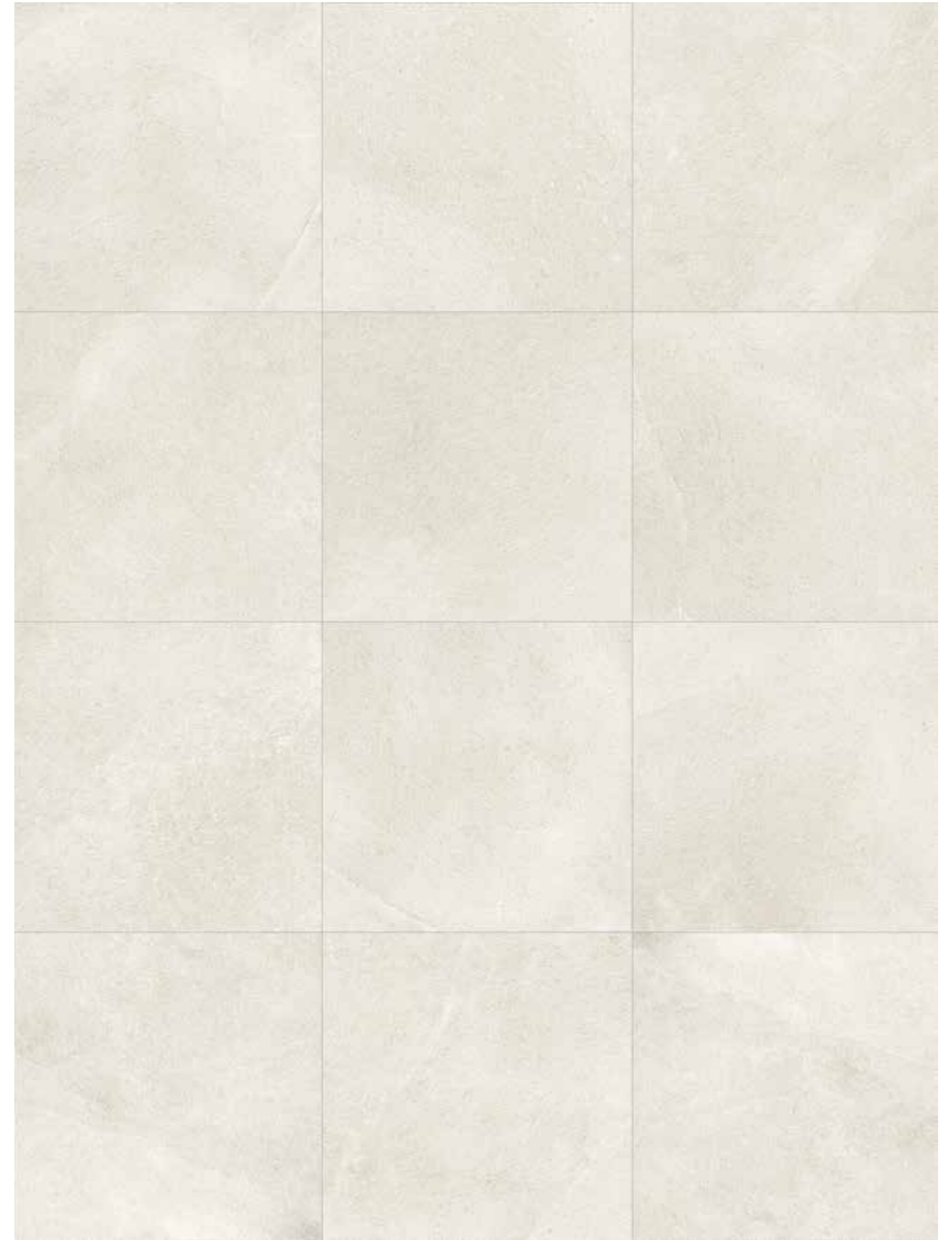
MARSTOOD STONE

Stone01
structured finish



60x60cm | 24"x24"

by CERAMICA MAGICA



V2
MODERATE



Marstood Stone
Stone01 structured
60x60cm | 24"x24"

MARSTOOD STONE

Stone02
structured finish



60x60cm | 24"x24"

by CERAMICA MAGICA



V2
MODERATE 

Marstood Stone
Stone02 structured
60x60cm | 24"x24"



by CERAMICA MAGICA

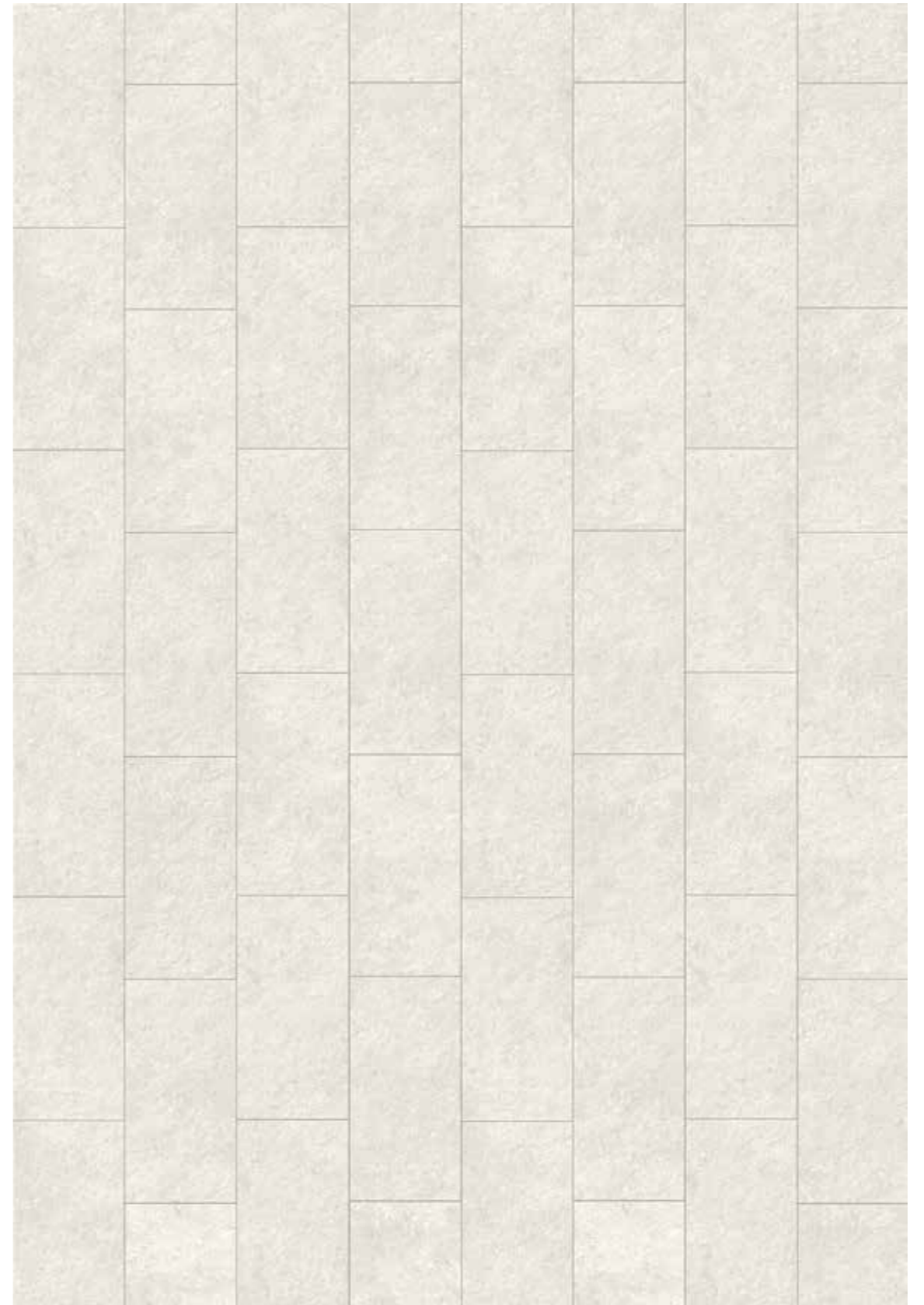
CEPPO

White
structured finish



60x120cm | 24"x48"

by CERAMICA MAGICA



V2
MODERATE 

Ceppo
White structured
60x120cm | 24"x48"



CEPPO


Grey
structured finish



60x120cm | 24"x48"

by CERAMICA MAGICA



V2
MODERATE 

Ceppo
White structured
60x120cm | 24"x48"



by CERAMICA MAGICA

MARSTOOD STONE


Stone05
structured finish



60x120cm | 24"x48"

by CERAMICA MAGICA



V2
MODERATE 



Marstood
Stone05 structured
60x120cm | 24"x48"

AVAILABLE SIZES

60x60cm | 24"x24"

KOS

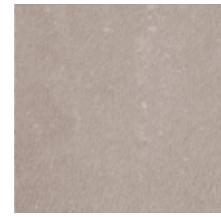


Brun

STONEDESIGN



Moln



Cinnamon

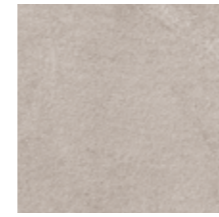


Ash

MARSTOOD STONE



Stone01



Stone02

90x90cm | 36"x36"

NORSE



Powder



Clay



Ash

LAGOM



Beige



Oyster



Smoke

KOS



Vit



Moln

AVAILABLE SIZES

60x120cm | 24"x48"

VICENTINA



Cenere

OPPDAL

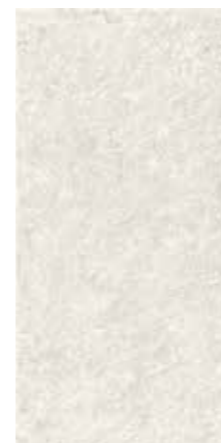


Bomull



Grus

CEPPO



White



Grey

MARSTOOD STONE



Stone05

30x120cm | 12"x48"

NODI



Libeccio



Scirocco

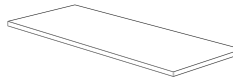
SPECIAL PIECES | PEZZI SPECIALI

COPING TILE | COPRIMURETTO
 12"x24" / 16"x32" / 18"x36" / 12"x48"
 30x60 / 40x80 / 45x90 / 30x120
 with non-drip edge on three sides
 con rompigoccia sui 3 lati



COPING TILE | COPRIMURETTO
 12"x24" / 16"x32" / 18"x36" / 12"x48"
 30x60 / 40x80 / 45x90 / 30x120
 with non-drip edge on two long sides
 con rompigoccia sui due lati lunghi

STEP TILE | GRADONE
 12"x24" / 16"x32" / 18"x36" / 12"x48"
 30x60 / 40x80 / 45x90 / 30x120
 on long side only
 lato lungo



STEP TILE | GRADONE
 12"x24" / 16"x32" / 18"x36" / 12"x48"
 30x60 / 40x80 / 45x90 / 30x120
 long side + right
 lato lungo + destro

STEP TILE | GRADONE
 12"x24" / 16"x32" / 18"x36" / 12"x48"
 30x60 / 40x80 / 45x90 / 30x120
 long side + left
 lato lungo + sinistro

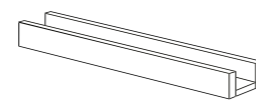
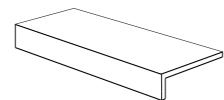
STEP TILE | GRADONE
 12"x24" / 16"x32" / 18"x36" / 12"x48"
 30x60 / 40x80 / 45x90 / 30x120
 long side + right + left
 lato lungo + destro + sinistro

RISER TILE | ALZATA
 8"x24" / 8"x32" / 8"x36" / 8"x48"
 20x60 / 20x80 / 20x90 / 20x120
 no shaped edges
 senza lati lavorati



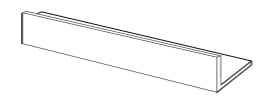
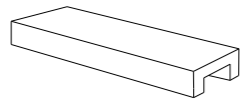
RISER TILE | ALZATA
 8"x24" / 8"x32" / 8"x36" / 8"x48"
 20x60 / 20x80 / 20x90 / 20x120
 with one shaped edge (R/L reversible)
 con un lato lavorato (dx/ sx reversibili)

RISER TILE | ALZATA
 8"x24" / 8"x32" / 8"x36" / 8"x40" / 8"x48"
 20x60 / 20x80 / 20x90 / 20x100 / 20x120
 with both shaped edges
 con entrambi i lati corti lavorati



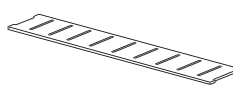
L-EDGING TILE | ELEMENTO-L
 6"x24"x2" / 6"x32"x2" / 5 1/2"x36"x2" / 6"x48"x2"
 15x60x4 / 15x80x4 / 14x90x4 / 15x120x4

GUTTER TILE | CANALINA
 6"x24"x3" / 6"x32"x3" / 6"x36"x3" / 6"x24"x3"
 15x60x8 / 15x80x8 / 15x90x8 / 15x60x8



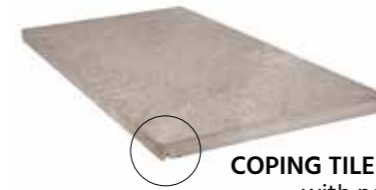
U-EDGING TILE | BORDO U
 6"x24"x6" / 6"x32"x6"
 15x60x15 / 15x80x15

L-KERB TILE | CORDOLO
 6"x24"x8" / 6"x32"x8" / 6"x36"x6" / 6"x48"x3"
 15x60x20 / 15x80x20 / 15x90x15 / 15x120x8



GRID TILE | GRIGLIA
 6"x24" / 6"x18"
 15x60 / 15x45

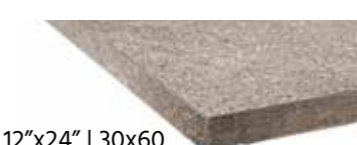
SPECIAL PIECES | PEZZI SPECIALI



COPING TILE | COPRIMURETTO 12"x24" | 30x60
 with non-drip edge on three sides
 ○NON-DRIP EDGE DETAIL



STEP TILE | GRADONE 12"x24" | 30x60
 on long side only



STEP TILE | GRADONE 12"x24" | 30x60
 long side + left



RISER TILE | ALZATA 8"x24" | 20x60
 with both shaped edges

L-EDGING TILE | ELEMENTO-L
 6"x24"x2" | 15x60x4



GUTTER TILE | CANALINA 6"x24"x3" | 15x60x8

GRID TILE | GRIGLIA 6"x24" | 15x60



L-KERB TILE | CORDOLO
 6"x24"x8" | 15x60x20

U-EDGING TILE | BORDO U
 6"x24"x6" | 15x60x15

PACKAGING | IMBALLI



NORSE	PCS/BOX	SQ.MT.	KG	BOXES	SQ.MT.	KG
90x90 36"x36" Powder ultra matt	1	0,81	21	34,57	17,01	746
90x90 36"x36" Clay ultra matt						
90x90 36"x36" Ash ultra matt						

LAGOM	PCS/BOX	SQ.MT.	KG	BOXES	SQ.MT.	KG
90x90 36"x36" Beige ultra matt	1	0,81	37,30	30	24,30	1.139
90x90 36"x36" Oyster ultra matt						
90x90 36"x36" Smoke ultra matt						

OPPDAL	PCS/BOX	SQ.MT.	KG	BOXES	SQ.MT.	KG
60x120 24"x48" Bomull ultra matt	1	0,72	33,25	30	21,60	1.018
60x120 24"x48" Grus ultra matt						

VICENTINA	PCS/BOX	SQ.MT.	KG	BOXES	SQ.MT.	KG
60x120 24"x48" Cenere ultra matt	1	0,72	33,25	30	21,60	1.018

KOS	PCS/BOX	SQ.MT.	KG	BOXES	SQ.MT.	KG
60x60 24"x24" Brun ultra matt	2	0,72	33,05	32	23,04	1.078
60x60 24"x24" Moln ultra matt						
90x90 36"x36" Vit ultra matt	1	0,81	36,56	30	24,30	1.117
90x90 36"x36" Moln ultra matt						

PACKAGING | IMBALLI



STONEDESIGN	PCS/BOX	SQ.MT.	KG	BOXES	SQ.MT.	KG
60x60 24"x24" Cinnamon chiselled	2	0,72	32,38	32	23,04	1.056
60x60 24"x24" Ash chiselled						

CEPPO	PCS/BOX	SQ.MT.	KG	BOXES	SQ.MT.	KG
60x120 24"x48" White structured	1	0,72	33,25	30	21,60	1.018
60x120 24"x48" Grey structured	1	0,72	33,25	30	21,60	1.018

MARSTOOD Stone	PCS/BOX	SQ.MT.	KG	BOXES	SQ.MT.	KG
60x60 24"x24" Marstood Stone01 structured	2	0,72	32,50	32	23,04	1.060
60x60 24"x24" Marstood Stone02 structured						
60x120 24"x48" Marstood Stone05 structured	1	0,72	33,25	30	21,60	1.018

NODI	PCS/BOX	SQ.MT.	KG	BOXES	SQ.MT.	KG
30x120 12"x48" Libeccio structured	2	0,72	32,95	36	25,92	1.206
30x120 12"x48" Scirocco structured						

TECHNICAL FEATURES | CARATTERISTICHE TECNICHE

TECHNICAL FEATURES UNGLAZED PORCELAIN STONEWARE

CONFORMING TO EUROPEAN STANDARDS EN 14411 ISO 13006 APP. G (GROUP BIA UGL E_B ≤ 0,5%)

CARATTERISTICHE TECNICHE GRÈS PORCELLANATO NON SMALTATO Conformi a Norme Europee EN 14411 ISO 13006 App. G (Gruppo Bia UGL E_B ≤ 0,5%)

TECHNISCHE EIGENSCHAFTEN UNGLASIERTES FEINSTEINZEUG Gemäß den Europäischen Normen EN 14411 ISO 13006 App. G (Gruppe Bia UGL E_B ≤ 0,5%)

CARACTERISTIQUES TECHNIQUES GRÈS CÉRAME FIN NON ÉMAILLÉ Conformes aux Normes Européennes EN 14411 ISO 13006 App. G (Groupe Bia UGL E_B ≤ 0,5%)

TERRATINTA
group



sizes

EN ISO 10545-2

compliant



water
absorption

EN ISO 10545-3

compliant



breaking
strength

EN ISO 10545-4

compliant
≥ 4000 N



abrasion
resistance

EN ISO 10545-6

average < 150mm³



thermal expansion
coefficient

EN ISO 10545-8

≤ 9 MK-1



thermal shock
resistance

EN ISO 10545-9

resistant



frost
resistance

EN ISO 10545-12

resistant



chemicals
resistance

EN ISO 10545-13

from ULA to ULB
from UHA to UHB
UA



stains
resistance

EN ISO 10545-14

class 5



colors
resistance to light

DIN 51094

no alteration
after testing



friction
coefficient

DIN 51130
DIN 51097
ANSI A 137.1 (DCOF)

R11
A+B
>0,42

CHANGE
TOGETHER



* It's advisable to refer Contract Division for all necessary guidelines to a correct use.
Si raccomanda di consultare la nostra Divisione Contract per le indicazioni necessarie al corretto utilizzo.
Merci de consulter notre Contract Division pour les indications à un usage correct.
Zur korrekten Anwendung wird empfohlen unsere Contract Division zu kontaktieren.



TERRATINTA
group

Certified



Corporation

terrattintagroup.com | Tel. +39 0536911408
via ViazallTronco 45 41042 Fiorano Modenese
(MO) Italy